

CPNE7 Antibody



PACO61169

Product Information

Size:

50ug

Reactivity:

Human, Mouse, Rat

Source:

Rabbit

Isotype:

IgG

Applications:

ELISA, WB, IHC, IF

Recommended dilutions:

ELISA:1:2000-1:10000, WB:1:500-1:5000,
IHC:1:200-1:500, IF:1:50-1:200

Protein Background:

Calcium-dependent phospholipid-binding protein that may play a role in calcium-mediated intracellular processes.

Gene ID:

CPNE7

Uniprot

Q9UBL6

Synonyms:

Copine-7 (Copine VII), CPNE7

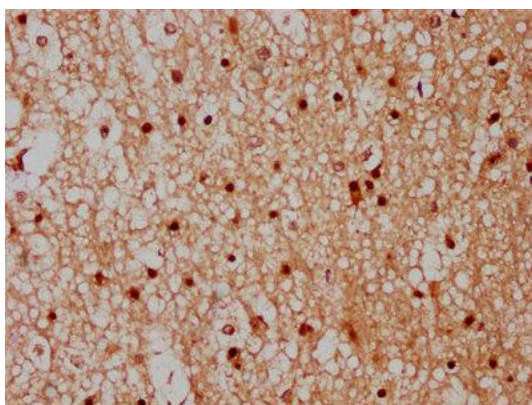
Immunogen:

Recombinant Human Copine-7 protein (254-393AA).

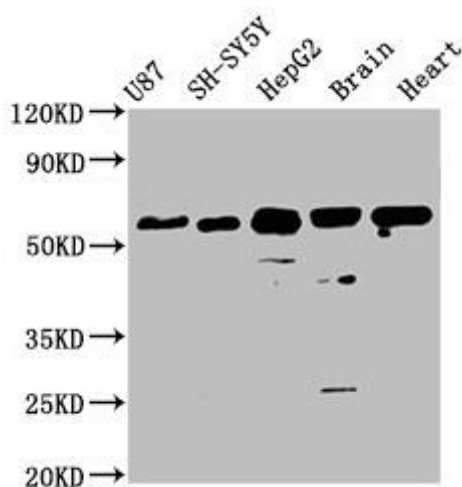
Storage:

Preservative: 0.03% Proclin 300. Constituents: 50% Glycerol, 0.01M PBS, pH 7.4

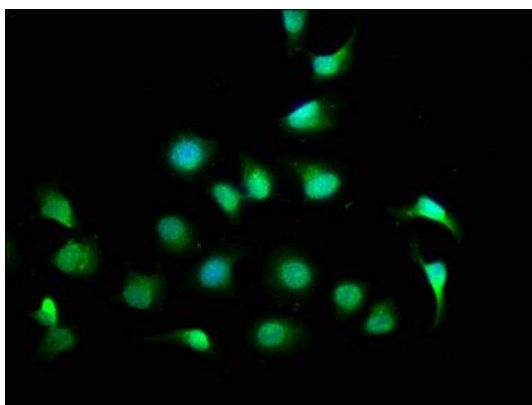
Product Images



IHC image of PACO61169 diluted at 1:300 and staining in paraffin-embedded human brain tissue performed on a Leica Bond™ system. After dewaxing and hydration, antigen retrieval was mediated by high pressure in a citrate buffer (pH 6.0). Section was blocked with 10% normal goat serum 30min at RT. Then primary antibody (1% BSA) was incubated at 4°C overnight. The primary is detected by a biotinylated secondary antibody and visualized using an HRP conjugated SP system.



Western Blot. Positive WB detected in: U87 whole cell lysate, SH-SY5Y whole cell lysate, HepG2 whole cell lysate, Mouse brain tissue, Rat heart tissue. All lanes: CPNE7 antibody at 3.6µg/ml. Secondary. Goat polyclonal to rabbit IgG at 1/50000 dilution. Predicted band size: 71, 62 kDa. Observed band size: 62 kDa.



Immunofluorescence staining of A549 cells with PACO61169 at 1:100, counter-stained with DAPI. The cells were fixed in 4% formaldehyde, permeabilized using 0.2% Triton X-100 and blocked in 10% normal Goat Serum. The cells were then incubated with the antibody overnight at 4°C. The secondary antibody was Alexa Fluor 488-conjugated AffiniPure Goat Anti-Rabbit IgG(H+L).