

TBC1D23 Antibody



PACO61165

Product Information

Size:

50ug

Reactivity:

Human

Source:

Rabbit

Isotype:

IgG

Applications:

ELISA, IHC

Recommended dilutions:

ELISA:1:2000-1:10000, IHC:1:200-1:500

Protein Background:

Golgi apparatus.

Gene ID:

TBC1D23

Uniprot

Q9NUY8

Synonyms:

TBC1 domain family member 23 (HCV non-structural protein 4A-transactivated protein 1), TBC1D23, NS4ATP1

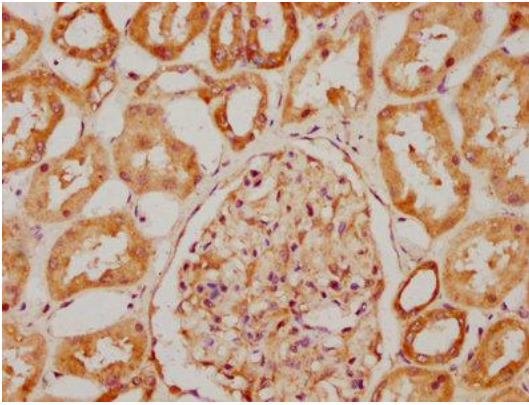
Immunogen:

Recombinant Human TBC1 domain family member 23 protein (510-605AA).

Storage:

Preservative: 0.03% Proclin 300. Constituents: 50% Glycerol, 0.01M PBS, pH 7.4

Product Images



IHC image of PACO61165 diluted at 1:200 and staining in paraffin-embedded human kidney tissue performed on a Leica Bond™ system. After dewaxing and hydration, antigen retrieval was mediated by high pressure in a citrate buffer (pH 6.0). Section was blocked with 10% normal goat serum 30min at RT. Then primary antibody (1% BSA) was incubated at 4°C overnight. The primary is detected by a biotinylated secondary antibody and visualized using an HRP conjugated SP system.