

### Product Information

**Size:**

50ug

**Reactivity:**

Human

**Source:**

Rabbit

**Isotype:**

IgG

**Applications:**

ELISA, IHC

**Recommended dilutions:**

ELISA:1:2000-1:10000, IHC:1:500-1:1000

**Protein Background:**

Rab effector playing a role in late endocytic transport to degradative compartments. Involved in the regulation of lysosomal morphology and distribution. Induces recruitment of dynein-dynactin motor complexes to Rab7A-containing late endosome and lysosome compartments. Promotes centripetal migration of phagosomes and the fusion of phagosomes with the late endosomes and lysosomes.

**Gene ID:**

RILP

**Uniprot**

Q96NA2

**Synonyms:**

Rab-interacting lysosomal protein, RILP

**Immunogen:**

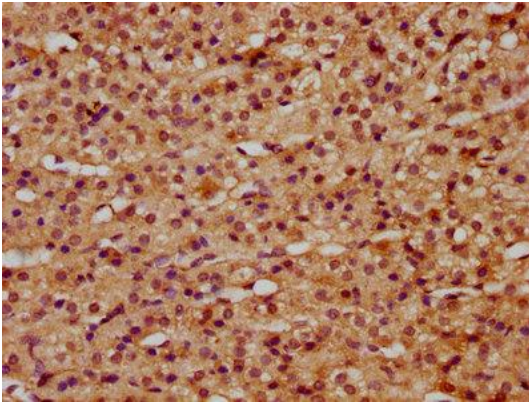
Recombinant Human Rab-interacting lysosomal protein (307-385AA).

**Storage:**

Preservative: 0.03% Proclin 300. Constituents: 50% Glycerol, 0.01M PBS, pH 7.4

## Product Images

---



IHC image of PACO61121 diluted at 1:500 and staining in paraffin-embedded human adrenal gland tissue performed on a Leica Bond™ system. After dewaxing and hydration, antigen retrieval was mediated by high pressure in a citrate buffer (pH 6.0). Section was blocked with 10% normal goat serum 30min at RT. Then primary antibody (1% BSA) was incubated at 4°C overnight. The primary is detected by a biotinylated secondary antibody and visualized using an HRP conjugated SP system.