

Product Information

Size:

50ug

Reactivity:

Human

Source:

Rabbit

Isotype:

IgG

Applications:

ELISA, WB

Recommended dilutions:

ELISA:1:2000-1:10000, WB:1:500-1:5000

Protein Background:

RNA-binding protein implicated in the regulation of pre-mRNA alternative splicing. Mediates exon inclusion and/or exclusion in pre-mRNA that are subject to tissue-specific and developmentally regulated alternative splicing. Specifically activates exon 5 inclusion of TNNT2 in a muscle-specific splicing enhancer (MSE)-dependent manner. Promotes also exon exclusion of INSR pre-mRNA.

Gene ID:

CELF6

Uniprot

Q96J87

Synonyms:

CUGBP Elav-like family member 6 (CELF-6) (Bruno-like protein 6) (CUG-BP- and ETR-3-like factor 6) (RNA-binding protein BRUNOL-6), CELF6, BRUNOL6

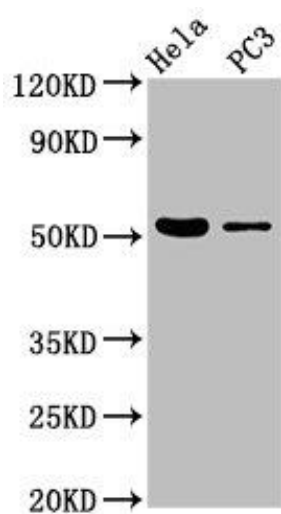
Immunogen:

Recombinant Human CUGBP Elav-like family member 6 protein (292-395AA).

Storage:

Preservative: 0.03% Proclin 300. Constituents: 50% Glycerol, 0.01M PBS, pH 7.4

Product Images



Western Blot. Positive WB detected in: Hela whole cell lysate, PC-3 whole cell lysate. All lanes: CELF6 antibody at 3.7 μ g/ml. Secondary. Goat polyclonal to rabbit IgG at 1/50000 dilution. Predicted band size: 51, 39, 48, 37 kDa. Observed band size: 51 kDa.