

## Product Information

**Size:**

50ug

**Reactivity:**

Human

**Source:**

Rabbit

**Isotype:**

IgG

**Applications:**

ELISA, WB, IHC, IF

**Recommended dilutions:**

ELISA:1:2000-1:10000, WB:1:500-1:5000,  
IHC:1:200-1:500, IF:1:50-1:200

**Protein Background:**

Regulatory subunit of the PI3K gamma complex. Acts as an adapter to drive activation of PIK3CG by beta-gamma G protein dimers. The PIK3CG: PIK3R6 heterodimer is much less sensitive to beta-gamma G protein dimers than PIK3CG: PIK3R5 and its membrane recruitment and beta-gamma G protein dimer-dependent activation requires HRAS bound to PIK3CG. Recruits of the PI3K gamma complex to a PDE3B: RAPGEF3 signaling complex involved in angiogenesis; signaling seems to involve RRAS.

**Gene ID:**

PIK3R6

**Uniprot**

Q5UE93

**Synonyms:**

Phosphoinositide 3-kinase regulatory subunit 6 (Phosphoinositide 3-kinase gamma adapter protein of 87 kDa) (p84 PI3K adapter protein) (p84 PIKAP) (p87 PI3K adapter protein) (p87PIKAP), PIK3R6, C17orf38

**Immunogen:**

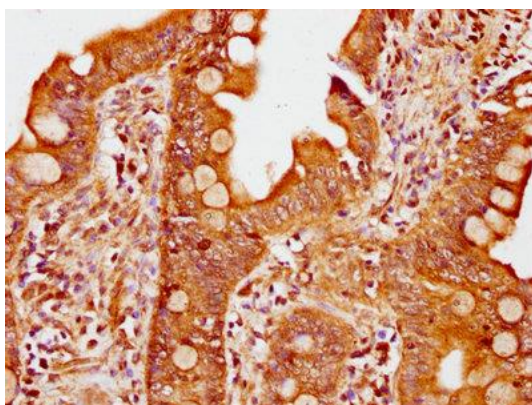
Recombinant Human Phosphoinositide 3-kinase regulatory subunit 6 protein (566-667AA).

**Storage:**

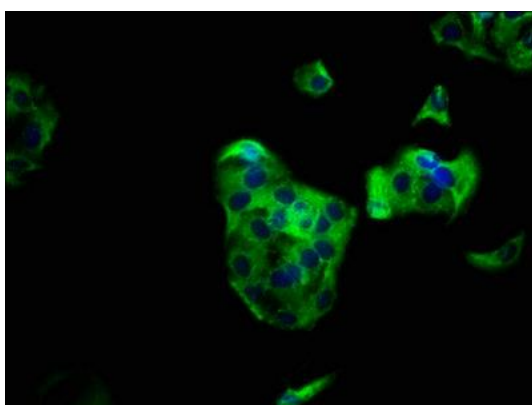
Preservative: 0.03% Proclin 300. Constituents: 50% Glycerol, 0.01M PBS, pH 7.4

## Product Images

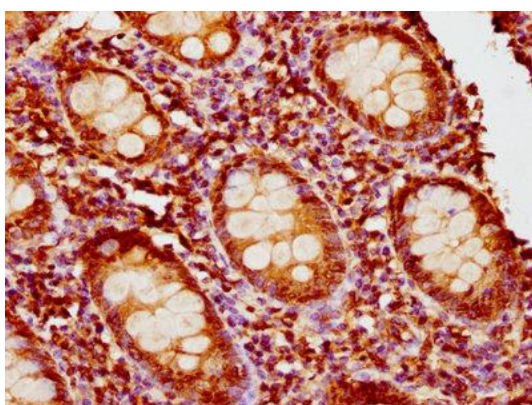
---



IHC image of PACO60997 diluted at 1:400 and staining in paraffin-embedded human small intestine tissue performed on a Leica Bond™ system. After dewaxing and hydration, antigen retrieval was mediated by high pressure in a citrate buffer (pH 6.0). Section was blocked with 10% normal goat serum 30min at RT. Then primary antibody (1% BSA) was incubated at 4°C overnight. The primary is detected by a biotinylated secondary antibody and visualized using an HRP conjugated SP system.



Immunofluorescence staining of HepG2 cells with PACO60997 at 1:133, counter-stained with DAPI. The cells were fixed in 4% formaldehyde, permeabilized using 0.2% Triton X-100 and blocked in 10% normal Goat Serum. The cells were then incubated with the antibody overnight at 4°C. The secondary antibody was Alexa Fluor 488-conjugated AffiniPure Goat Anti-Rabbit IgG(H+L).



IHC image of PACO60997 diluted at 1:400 and staining in paraffin-embedded human appendix tissue performed on a Leica Bond™ system. After dewaxing and hydration, antigen retrieval was mediated by high pressure in a citrate buffer (pH 6.0). Section was blocked with 10% normal goat serum 30min at RT. Then primary antibody (1% BSA) was incubated at 4°C overnight. The primary is detected by a biotinylated secondary antibody and visualized using an HRP conjugated SP system.