

Product Information

Size:

50ug

Reactivity:

Human

Source:

Rabbit

Isotype:

IgG

Applications:

ELISA, IHC

Recommended dilutions:

ELISA:1:2000-1:10000, IHC:1:500-1:1000

Protein Background:

The glycine cleavage system catalyzes the degradation of glycine. The P protein (GLDC) binds the alpha-amino group of glycine through its pyridoxal phosphate cofactor; CO(2) is released and the remaining methylamine moiety is then transferred to the lipamide cofactor of the H protein (GCSH).

Gene ID:

GLDC

Uniprot

P23378

Synonyms:

Glycine dehydrogenase (decarboxylating), mitochondrial (EC 1.4.4.2) (Glycine cleavage system P protein) (Glycine decarboxylase) (Glycine dehydrogenase (aminomethyl-transferring)), GLDC, GCSP

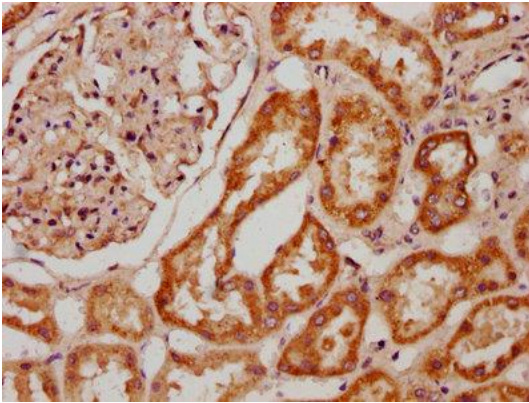
Immunogen:

Recombinant Human Glycine dehydrogenase (decarboxylating), mitochondrial protein (868-984AA).

Storage:

Preservative: 0.03% Proclin 300. Constituents: 50% Glycerol, 0.01M PBS, pH 7.4

Product Images



IHC image of PACO60929 diluted at 1:600 and staining in paraffin-embedded human kidney tissue performed on a Leica Bond™ system. After dewaxing and hydration, antigen retrieval was mediated by high pressure in a citrate buffer (pH 6.0). Section was blocked with 10% normal goat serum 30min at RT. Then primary antibody (1% BSA) was incubated at 4°C overnight. The primary is detected by a biotinylated secondary antibody and visualized using an HRP conjugated SP system.