

TOX2 Antibody



PACO60857

Product Information

Size:

50ug

Reactivity:

Human

Source:

Rabbit

Isotype:

IgG

Applications:

ELISA, WB

Recommended dilutions:

ELISA:1:2000-1:10000, WB:1:500-1:5000

Protein Background:

Putative transcriptional activator involved in the hypothalamo-pituitary-gonadal system.

Gene ID:

TOX2

Uniprot

Q96NM4

Synonyms:

TOX high mobility group box family member 2 (Granulosa cell HMG box protein 1) (GCX-1), TOX2, C20orf100 GCX1

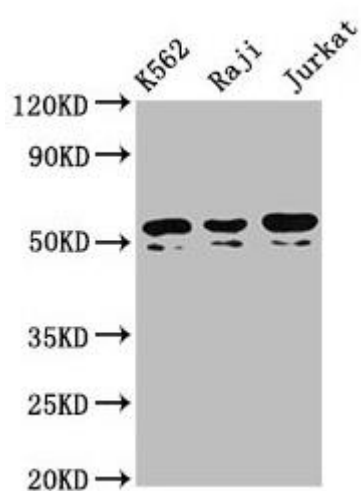
Immunogen:

Recombinant Human TOX high mobility group box family member 2 protein (303-417AA).

Storage:

Preservative: 0.03% Proclin 300. Constituents: 50% Glycerol, 0.01M PBS, pH 7.4

Product Images



Western Blot. Positive WB detected in: K562 whole cell lysate, Raji whole cell lysate, Jurkat whole cell lysate. All lanes: TOX2 antibody at 4.3 μ g/ml. Secondary. Goat polyclonal to rabbit IgG at 1/50000 dilution. Predicted band size: 52, 55, 50, 54 kDa. Observed band size: 52, 50 kDa.