

PACO60673

---

## Product Information

**Size:**

50ug

**Reactivity:**

Human

**Source:**

Rabbit

**Isotype:**

IgG

**Applications:**

ELISA, WB, IHC

**Recommended dilutions:**

ELISA:1:2000-1:10000, WB:1:500-1:5000,  
IHC:1:200-1:500

**Protein Background:**

Catalyzes a rate-limiting step in cholesterol catabolism and bile acid, biosynthesis by introducing a hydrophilic moiety at position 7 of cholesterol. Important for cholesterol homeostasis.

**Gene ID:**

CYP7A1

**Uniprot**

P22680

**Synonyms:**

Cholesterol 7-alpha-monooxygenase (EC 1.14.14.23) (CYPVII) (Cholesterol 7-alpha-hydroxylase) (Cytochrome P450 7A1), CYP7A1, CYP7

**Immunogen:**

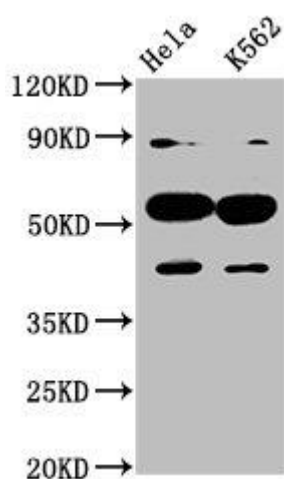
Recombinant Human Cholesterol 7-alpha-monooxygenase protein (303-423AA).

**Storage:**

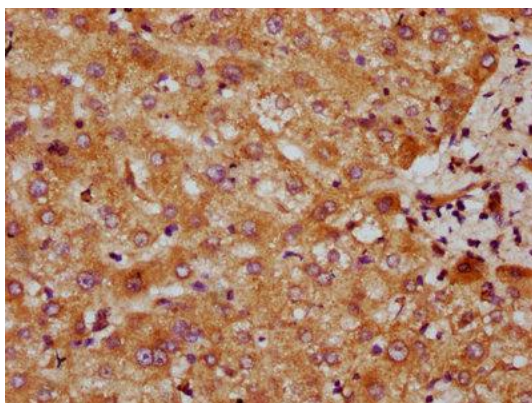
Preservative: 0.03% Proclin 300. Constituents: 50% Glycerol, 0.01M PBS, pH 7.4

## Product Images

---



Western Blot. Positive WB detected in: HeLa whole cell lysate, K562 whole cell lysate. All lanes: CYP7A1 antibody at 4.5 $\mu$ g/ml. Secondary: Goat polyclonal to rabbit IgG at 1/50000 dilution. Predicted band size: 58 kDa. Observed band size: 58 kDa.



IHC image of PACO60673 diluted at 1:300 and staining in paraffin-embedded human liver tissue performed on a Leica Bond<sup>TM</sup> system. After dewaxing and hydration, antigen retrieval was mediated by high pressure in a citrate buffer (pH 6.0). Section was blocked with 10% normal goat serum 30min at RT. Then primary antibody (1% BSA) was incubated at 4 $^{\circ}$ C overnight. The primary is detected by a biotinylated secondary antibody and visualized using an HRP conjugated SP system.