

PACO60396

---

## Product Information

**Size:**

50ug

**Reactivity:**

Human

**Source:**

Rabbit

**Isotype:**

IgG

**Applications:**

ELISA, IF

**Recommended dilutions:**

ELISA:1:2000-1:10000, IF:1:50-1:200

**Protein Background:**

Calcium channel mediating constitutive calcium ion entry. Its activity is increased by reduction in extracellular osmolarity, by store depletion and muscarinic receptor activation.

**Gene ID:**

TRPM3

**Uniprot**

Q9HCF6

**Synonyms:**

Transient receptor potential cation channel subfamily M member 3 (Long transient receptor potential channel 3) (LTrpC-3) (LTrpC3) (Melastatin-2) (MLSN2), TRPM3, KIAA1616 LTRPC3

**Immunogen:**

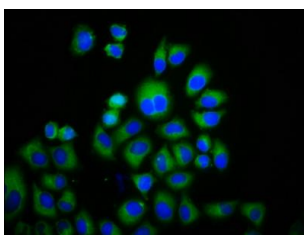
Recombinant Human Transient receptor potential cation channel subfamily M member 3 protein (1606-1713AA).

**Storage:**

Preservative: 0.03% Proclin 300. Constituents: 50% Glycerol, 0.01M PBS, pH 7.4

## Product Images

---



Immunofluorescence staining of HeLa cells with PACO60396 at 1:133, counter-stained with DAPI. The cells were fixed in 4% formaldehyde, permeabilized using 0.2% Triton X-100 and blocked in 10% normal Goat Serum. The cells were then incubated with the antibody overnight at 4°C. The secondary antibody was Alexa Fluor 488-conjugated AffiniPure Goat Anti-Rabbit IgG(H+L).