

# DCLRE1B Antibody



PACO60384

---

## Product Information

**Size:**

50ug

**Reactivity:**

Human

**Source:**

Rabbit

**Isotype:**

IgG

**Applications:**

ELISA, IF

**Recommended dilutions:**

ELISA:1:2000-1:10000, IF:1:50-1:200

**Protein Background:**

**Gene ID:**

DCLRE1B

**Uniprot**

Q9H816

**Synonyms:**

5' exonuclease Apollo (EC 3.1) (DNA cross-link repair 1B protein) (SNM1 homolog B) (SNM1B) (hSNM1B), DCLRE1B, SNM1B

**Immunogen:**

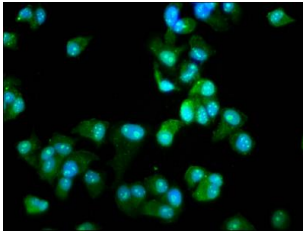
Recombinant Human 5' exonuclease Apollo protein (345-493AA).

**Storage:**

Preservative: 0.03% Proclin 300. Constituents: 50% Glycerol, 0.01M PBS, pH 7.4

## Product Images

---



Immunofluorescence staining of MCF-7 cells with PACO60384 at 1:66, counter-stained with DAPI. The cells were fixed in 4% formaldehyde, permeabilized using 0.2% Triton X-100 and blocked in 10% normal Goat Serum. The cells were then incubated with the antibody overnight at 4°C. The secondary antibody was Alexa Fluor 488-conjugated AffiniPure Goat Anti-Rabbit IgG(H+L).