

BARHL1 Antibody



PACO60380

Product Information

Size:

50ug

Reactivity:

Human

Source:

Rabbit

Isotype:

IgG

Applications:

ELISA, WB, IHC

Recommended dilutions:

ELISA:1:2000-1:10000, WB:1:500-1:5000,
IHC:1:200-1:500

Protein Background:

nucleus, RNA polymerase II regulatory region sequence-specific DNA binding, transcriptional activator activity, RNA polymerase II transcription regulatory region sequence-specific binding, regulation of transcription from RNA polymerase II promoter.

Gene ID:

BARHL1

Uniprot

Q9BZE3

Synonyms:

BarH-like 1 homeobox protein, BARHL1

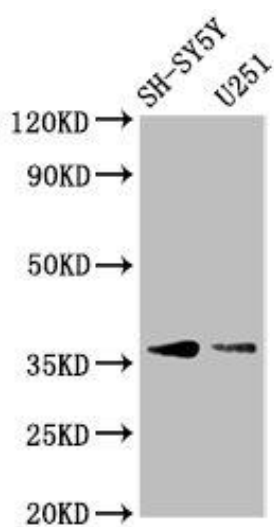
Immunogen:

Recombinant Human BarH-like 1 homeobox protein (38-176AA).

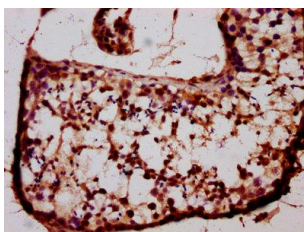
Storage:

Preservative: 0.03% Proclin 300. Constituents: 50% Glycerol, 0.01M PBS, pH 7.4

Product Images



Western Blot. Positive WB detected in: SH-SY5Y whole cell lysate, U251 whole cell lysate. All lanes: BARHL1 antibody at 3.4 μ g/ml. Secondary: Goat polyclonal to rabbit IgG at 1/50000 dilution. Predicted band size: 36 kDa. Observed band size: 36 kDa.



IHC image of PACO60380 diluted at 1:400 and staining in paraffin-embedded human testis tissue performed on a Leica BondTM system. After dewaxing and hydration, antigen retrieval was mediated by high pressure in a citrate buffer (pH 6.0). Section was blocked with 10% normal goat serum 30min at RT. Then primary antibody (1% BSA) was incubated at 4°C overnight. The primary is detected by a biotinylated secondary antibody and visualized using an HRP conjugated SP system.