

# MFSD4A Antibody



PACO60292

---

## Product Information

**Size:**

50ug

**Reactivity:**

Human

**Source:**

Rabbit

**Isotype:**

IgG

**Applications:**

ELISA, WB, IF

**Recommended dilutions:**

ELISA:1:2000-1:10000, WB:1:500-1:5000,  
IF:1:50-1:200

**Protein Background:**

glucose transmembrane transporter activity.

**Gene ID:**

MFSD4A

**Uniprot**

Q8N468

**Synonyms:**

Major facilitator superfamily domain-containing protein 4A (Major facilitator superfamily domain-containing protein 4), MFSD4A, MFSD4

**Immunogen:**

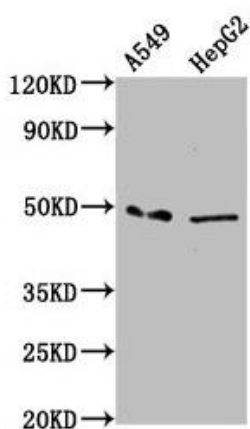
Recombinant Human Major facilitator superfamily domain-containing protein 4A protein (160-220AA).

**Storage:**

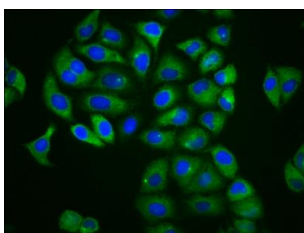
Preservative: 0.03% Proclin 300. Constituents: 50% Glycerol, 0.01M PBS, pH 7.4

## Product Images

---



Western Blot. Positive WB detected in: A549 whole cell lysate, HepG2 whole cell lysate. All lanes: MFSD4A antibody at 3.38 $\mu$ g/ml. Secondary: Goat polyclonal to rabbit IgG at 1/50000 dilution. Predicted band size: 57, 47 kDa. Observed band size: 47 kDa.



Immunofluorescence staining of HeLa cells with PACO60292 at 1:166, counter-stained with DAPI. The cells were fixed in 4% formaldehyde, permeabilized using 0.2% Triton X-100 and blocked in 10% normal Goat Serum. The cells were then incubated with the antibody overnight at 4°C. The secondary antibody was Alexa Fluor 488-conjugated AffiniPure Goat Anti-Rabbit IgG(H+L).