

MARVELD3 Antibody



PACO60264

Product Information

Size:

50ug

Reactivity:

Human

Source:

Rabbit

Isotype:

IgG

Applications:

ELISA, IF

Recommended dilutions:

ELISA:1:2000-1:10000, IF:1:50-1:200

Protein Background:

As a component of tight junctions, plays a role in paracellular ion conductivity.

Gene ID:

MARVELD3

Uniprot

Q96A59

Synonyms:

MARVEL domain-containing protein 3, MARVELD3, MRVLDC3

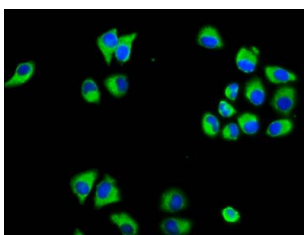
Immunogen:

Recombinant Human MARVEL domain-containing protein 3 protein (1-189AA).

Storage:

Preservative: 0.03% Proclin 300. Constituents: 50% Glycerol, 0.01M PBS, pH 7.4

Product Images



Immunofluorescence staining of HeLa cells with PACO60264 at 1:133, counter-stained with DAPI. The cells were fixed in 4% formaldehyde, permeabilized using 0.2% Triton X-100 and blocked in 10% normal Goat Serum. The cells were then incubated with the antibody overnight at 4°C. The secondary antibody was Alexa Fluor 488-conjugated AffiniPure Goat Anti-Rabbit IgG(H+L).