

CTAGE1 Antibody



PACO60244

Product Information

Size:

50ug

Reactivity:

Human

Source:

Rabbit

Isotype:

IgG

Applications:

ELISA, IF

Recommended dilutions:

ELISA:1:2000-1:10000, IF:1:200-1:500

Protein Background:

Gene ID:

CTAGE1

Uniprot

Q96RT6

Synonyms:

cTAGE family member 2 (Protein cTAGE-2) (Cancer/testis antigen 21.2) (CT21.2), CTAGE1, CTAGE2

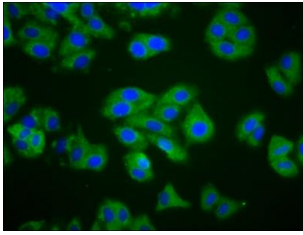
Immunogen:

Recombinant Human cTAGE family member 2 protein (471-595AA).

Storage:

Preservative: 0.03% Proclin 300. Constituents: 50% Glycerol, 0.01M PBS, pH 7.4

Product Images



Immunofluorescence staining of HepG2 cells with PACO60244 at 1:200, counter-stained with DAPI. The cells were fixed in 4% formaldehyde, permeabilized using 0.2% Triton X-100 and blocked in 10% normal Goat Serum. The cells were then incubated with the antibody overnight at 4°C. The secondary antibody was Alexa Fluor 488-conjugated AffiniPure Goat Anti-Rabbit IgG(H+L).