

PACO60228

Product Information

Size:

50ug

Reactivity:

Human

Source:

Rabbit

Isotype:

IgG

Applications:

ELISA, IHC

Recommended dilutions:

ELISA:1:2000-1:10000, IHC:1:200-1:500

Protein Background:

PPLases accelerate the folding of proteins during protein synthesis.

Gene ID:

FKBP10

Uniprot

Q96AY3

Synonyms:

Peptidyl-prolyl cis-trans isomerase FKBP10 (PPlase FKBP10) (EC 5.2.1.8) (65 kDa FK506-binding protein) (65 kDa FKBP) (FKBP-65) (FK506-binding protein 10) (FKBP-10) (Immunophilin FKBP65) (Rotamase), FKBP10, FKBP65

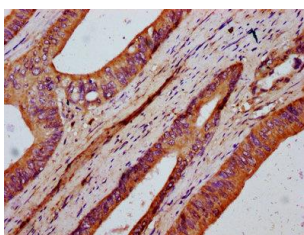
Immunogen:

Recombinant Human Peptidyl-prolyl cis-trans isomerase FKBP10 protein (459-579AA).

Storage:

Preservative: 0.03% Proclin 300. Constituents: 50% Glycerol, 0.01M PBS, pH 7.4

Product Images



IHC image of PACO60228 diluted at 1:400 and staining in paraffin-embedded human colon cancer performed on a Leica Bond™ system. After dewaxing and hydration, antigen retrieval was mediated by high pressure in a citrate buffer (pH 6.0). Section was blocked with 10% normal goat serum 30min at RT. Then primary antibody (1% BSA) was incubated at 4°C overnight. The primary is detected by a biotinylated secondary antibody and visualized using an HRP conjugated SP system.