

# MAML2 Antibody



PACO60200

---

## Product Information

**Size:**

50ug

**Reactivity:**

Human

**Source:**

Rabbit

**Isotype:**

IgG

**Applications:**

ELISA, WB, IHC

**Recommended dilutions:**

ELISA:1:2000-1:10000, WB:1:500-1:5000,  
IHC:1:500-1:1000

**Protein Background:**

Acts as a transcriptional coactivator for NOTCH proteins. Has been shown to amplify NOTCH-induced transcription of HES1. Potentiates activation by NOTCH3 and NOTCH4 more efficiently than MAML1 or MAML3.

**Gene ID:**

MAML2

**Uniprot**

Q8IZL2

**Synonyms:**

Mastermind-like protein 2 (Mam-2), MAML2, KIAA1819

**Immunogen:**

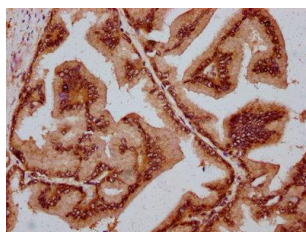
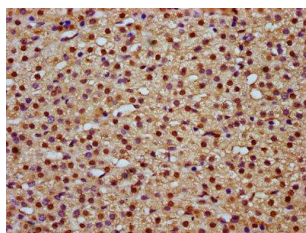
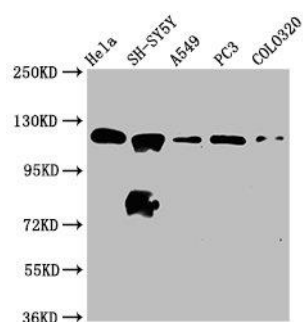
Recombinant Human Mastermind-like protein 2 protein (347-506AA).

**Storage:**

Preservative: 0.03% Proclin 300. Constituents: 50% Glycerol, 0.01M PBS, pH 7.4

## Product Images

---



Western Blot. Positive WB detected in: HeLa whole cell lysate, SH-SY5Y whole cell lysate, A549 whole cell lysate, PC-3 whole cell lysate, COLO320 whole cell lysate. All lanes: MAML2 antibody at 2.2 $\mu$ g/ml. Secondary. Goat polyclonal to rabbit IgG at 1/50000 dilution. Predicted band size: 126 kDa. Observed band size: 126 kDa.

IHC image of PACO60200 diluted at 1:800 and staining in paraffin-embedded human adrenal gland tissue performed on a Leica Bond<sup>TM</sup> system. After dewaxing and hydration, antigen retrieval was mediated by high pressure in a citrate buffer (pH 6.0). Section was blocked with 10% normal goat serum 30min at RT. Then primary antibody (1% BSA) was incubated at 4°C overnight. The primary is detected by a biotinylated secondary antibody and visualized using an HRP conjugated SP system.

IHC image of PACO60200 diluted at 1:800 and staining in paraffin-embedded human prostate tissue performed on a Leica Bond<sup>TM</sup> system. After dewaxing and hydration, antigen retrieval was mediated by high pressure in a citrate buffer (pH 6.0). Section was blocked with 10% normal goat serum 30min at RT. Then primary antibody (1% BSA) was incubated at 4°C overnight. The primary is detected by a biotinylated secondary antibody and visualized using an HRP conjugated SP system.