

## Product Information

**Size:**

50ug

**Reactivity:**

Human

**Source:**

Rabbit

**Isotype:**

IgG

**Applications:**

ELISA, IF

**Recommended dilutions:**

ELISA:1:2000-1:10000, IF:1:50-1:200

**Protein Background:**

Regulates localization of phosphatidylinositol 4-kinase (PI4K) to the plasma membrane, possibly by reducing the association of TTC7 (TTC7A or TTC7B) with the PI4K complex. Acts as a regulator of phosphatidylinositol 4-phosphate (PtdIns(4)P) synthesis. May also play a role in fasting-induced catabolism.

**Gene ID:**

TMEM150A

**Uniprot**

Q86TG1

**Synonyms:**

Transmembrane protein 150A (Transmembrane protein 150), TMEM150A, TMEM150

**Immunogen:**

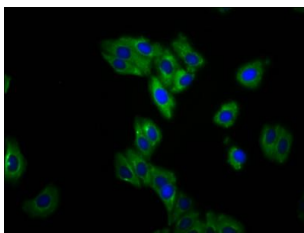
Recombinant Human Transmembrane protein 150A protein (24-75AA).

**Storage:**

Preservative: 0.03% Proclin 300. Constituents: 50% Glycerol, 0.01M PBS, pH 7.4

## Product Images

---



Immunofluorescence staining of HepG2 cells with PACO60192 at 1:133, counter-stained with DAPI. The cells were fixed in 4% formaldehyde, permeabilized using 0.2% Triton X-100 and blocked in 10% normal Goat Serum. The cells were then incubated with the antibody overnight at 4°C. The secondary antibody was Alexa Fluor 488-conjugated AffiniPure Goat Anti-Rabbit IgG(H+L).