

### Product Information

**Size:**

50ug

**Reactivity:**

Human

**Source:**

Rabbit

**Isotype:**

IgG

**Applications:**

ELISA, IF

**Recommended dilutions:**

ELISA:1:2000-1:10000, IF:1:50-1:200

**Protein Background:**

Cation channel essential for the depolarizing photoresponse of retinal ON bipolar cells. It is part of the GRM6 signaling cascade. May play a role in metastasis suppression. May act as a spontaneously active, calcium-permeable plasma membrane channel.

**Gene ID:**

TRPM1

**Uniprot**

Q7Z4N2

**Synonyms:**

Transient receptor potential cation channel subfamily M member 1 (Long transient receptor potential channel 1) (LTrpC1) (Melastatin-1), TRPM1, LTRPC1, MLSN, MLSN1

**Immunogen:**

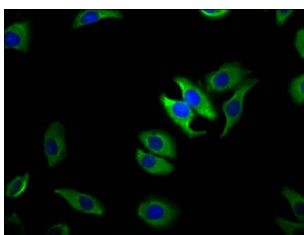
Recombinant Human Transient receptor potential cation channel subfamily M member 1 protein (1-97AA).

**Storage:**

Preservative: 0.03% Proclin 300. Constituents: 50% Glycerol, 0.01M PBS, pH 7.4

## Product Images

---



Immunofluorescence staining of A549 cells with PACO60188 at 1:100, counter-stained with DAPI. The cells were fixed in 4% formaldehyde, permeabilized using 0.2% Triton X-100 and blocked in 10% normal Goat Serum. The cells were then incubated with the antibody overnight at 4°C. The secondary antibody was Alexa Fluor 488-conjugated AffiniPure Goat Anti-Rabbit IgG(H+L).