

PACO60156

Product Information

Size:

50ug

Reactivity:

Human

Source:

Rabbit

Isotype:

IgG

Applications:

ELISA, IHC, IF

Recommended dilutions:

ELISA:1:2000-1:10000, IHC:1:500-1:1000,
IF:1:50-1:200

Protein Background:

Lipid tetraspanin-associated transmembrane adapter/mediator involved in major histocompatibility complex (MHC) class II signaling transduction. Required in generating the calcium response and enhancing ERK activity upon MHC-II stimulation.

Gene ID:

SCIMP

Uniprot

Q6UWF3

Synonyms:

SLP adapter and CSK-interacting membrane protein (SLP65/SLP76, Csk-interacting membrane protein), SCIMP, C17orf87

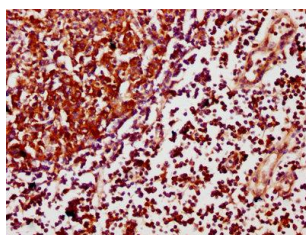
Immunogen:

Recombinant Human SLP adapter and CSK-interacting membrane protein (59-145AA).

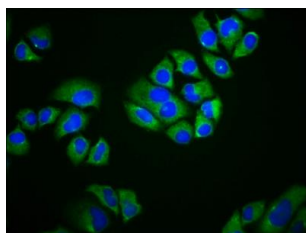
Storage:

Preservative: 0.03% Proclin 300. Constituents: 50% Glycerol, 0.01M PBS, pH 7.4

Product Images



IHC image of PACO60156 diluted at 1:500 and staining in paraffin-embedded human lymph node tissue performed on a Leica Bond™ system. After dewaxing and hydration, antigen retrieval was mediated by high pressure in a citrate buffer (pH 6.0). Section was blocked with 10% normal goat serum 30min at RT. Then primary antibody (1% BSA) was incubated at 4°C overnight. The primary is detected by a biotinylated secondary antibody and visualized using an HRP conjugated SP system.



Immunofluorescence staining of HeLa cells with PACO60156 at 1:166, counter-stained with DAPI. The cells were fixed in 4% formaldehyde, permeabilized using 0.2% Triton X-100 and blocked in 10% normal Goat Serum. The cells were then incubated with the antibody overnight at 4°C. The secondary antibody was Alexa Fluor 488-conjugated AffiniPure Goat Anti-Rabbit IgG(H+L).