

PACO60056

Product Information

Size:

50ug

Reactivity:

Human

Source:

Rabbit

Isotype:

IgG

Applications:

ELISA, IHC

Recommended dilutions:

ELISA:1:2000-1:10000, IHC:1:500-1:1000

Protein Background:

DNA binding protein that function as transcriptional activator. Is essential for normal postnatal growth and nursing. Is an essential factor for neuronal neuropeptide Y and agouti-related peptide function and locomotory behavior in the control of energy balance.

Gene ID:

BSX

Uniprot

Q3C1V8

Synonyms:

Brain-specific homeobox protein homolog, BSX, BSX1

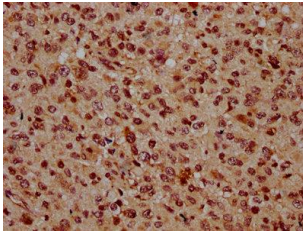
Immunogen:

Recombinant Human Brain-specific homeobox protein homolog protein (1-233AA).

Storage:

Preservative: 0.03% Proclin 300. Constituents: 50% Glycerol, 0.01M PBS, pH 7.4

Product Images



IHC image of PACO60056 diluted at 1:500 and staining in paraffin-embedded human glioma performed on a Leica Bond™ system. After dewaxing and hydration, antigen retrieval was mediated by high pressure in a citrate buffer (pH 6.0). Section was blocked with 10% normal goat serum 30min at RT. Then primary antibody (1% BSA) was incubated at 4°C overnight. The primary is detected by a biotinylated secondary antibody and visualized using an HRP conjugated SP system.