

INF2 Antibody



PACO60048

Product Information

Size:

50ug

Reactivity:

Human

Source:

Rabbit

Isotype:

IgG

Applications:

ELISA, IHC

Recommended dilutions:

ELISA:1:2000-1:10000, IHC:1:200-1:500

Protein Background:

Severs actin filaments and accelerates their polymerization and depolymerization.

Gene ID:

INF2

Uniprot

Q27J81

Synonyms:

Inverted formin-2 (HBEBP2-binding protein C), INF2, C14orf151 C14orf173

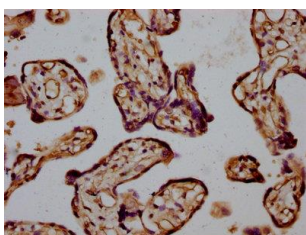
Immunogen:

Recombinant Human Inverted formin-2 protein (926-1047AA).

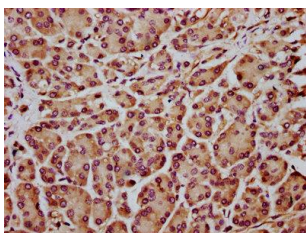
Storage:

Preservative: 0.03% Proclin 300. Constituents: 50% Glycerol, 0.01M PBS, pH 7.4

Product Images



IHC image of PACO60048 diluted at 1:400 and staining in paraffin-embedded human placenta tissue performed on a Leica Bond™ system. After dewaxing and hydration, antigen retrieval was mediated by high pressure in a citrate buffer (pH 6.0). Section was blocked with 10% normal goat serum 30min at RT. Then primary antibody (1% BSA) was incubated at 4°C overnight. The primary is detected by a biotinylated secondary antibody and visualized using an HRP conjugated SP system.



IHC image of PACO60048 diluted at 1:400 and staining in paraffin-embedded human pancreatic cancer performed on a Leica Bond™ system. After dewaxing and hydration, antigen retrieval was mediated by high pressure in a citrate buffer (pH 6.0). Section was blocked with 10% normal goat serum 30min at RT. Then primary antibody (1% BSA) was incubated at 4°C overnight. The primary is detected by a biotinylated secondary antibody and visualized using an HRP conjugated SP system.