

KIR2DS5 Antibody



PACO60020

Product Information

Size:

50ug

Reactivity:

Human

Source:

Rabbit

Isotype:

IgG

Applications:

ELISA, IF

Recommended dilutions:

ELISA:1:2000-1:10000, IF:1:50-1:200

Protein Background:

Receptor on natural killer (NK) cells for HLA-C alleles. Does not inhibit the activity of NK cells.

Gene ID:

KIR2DS5

Uniprot

Q14953

Synonyms:

Killer cell immunoglobulin-like receptor 2DS5 (CD158 antigen-like family member G) (MHC class I NK cell receptor) (Natural killer-associated transcript 9) (NKAT-9) (CD antigen CD158g), KIR2DS5, CD158G NKAT9

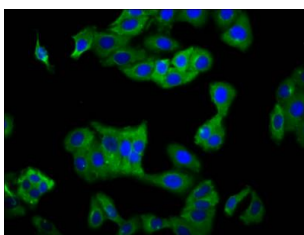
Immunogen:

Recombinant Human Killer cell immunoglobulin-like receptor 2DS5 protein (162-242AA).

Storage:

Preservative: 0.03% Proclin 300. Constituents: 50% Glycerol, 0.01M PBS, pH 7.4

Product Images



Immunofluorescence staining of HepG2 cells with PACO60020 at 1:100, counter-stained with DAPI. The cells were fixed in 4% formaldehyde, permeabilized using 0.2% Triton X-100 and blocked in 10% normal Goat Serum. The cells were then incubated with the antibody overnight at 4°C. The secondary antibody was Alexa Fluor 488-conjugated AffiniPure Goat Anti-Rabbit IgG(H+L).