

# PDE6C Antibody



PACO59952

---

## Product Information

**Size:**

50ug

**Reactivity:**

Human

**Source:**

Rabbit

**Isotype:**

IgG

**Applications:**

ELISA, WB, IF

**Recommended dilutions:**

ELISA:1:2000-1:10000, WB:1:500-1:5000,  
IF:1:50-1:200

**Protein Background:**

visual perception.

**Gene ID:**

PDE6C

**Uniprot**

P51160

**Synonyms:**

Cone cGMP-specific 3',5'-cyclic phosphodiesterase subunit alpha' (EC 3.1.4.35) (cGMP phosphodiesterase 6C), PDE6C, PDEA2

**Immunogen:**

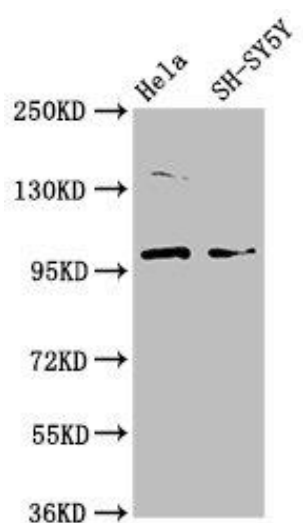
Recombinant Human Cone cGMP-specific 3',5'-cyclic phosphodiesterase subunit alpha' protein (285-451AA).

**Storage:**

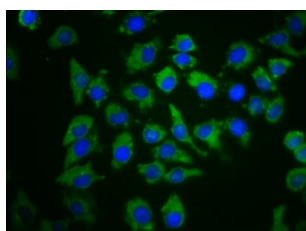
Preservative: 0.03% Proclin 300. Constituents: 50% Glycerol, 0.01M PBS, pH 7.4

## Product Images

---



Western Blot. Positive WB detected in: HeLa whole cell lysate, SH-SY5Y whole cell lysate. All lanes: PDE6C antibody at 3.7 μg/ml. Secondary. Goat polyclonal to rabbit IgG at 1/50000 dilution. Predicted band size: 100 kDa. Observed band size: 100 kDa.



Immunofluorescence staining of A549 cells with PACO59952 at 1:66, counter-stained with DAPI. The cells were fixed in 4% formaldehyde, permeabilized using 0.2% Triton X-100 and blocked in 10% normal Goat Serum. The cells were then incubated with the antibody overnight at 4°C. The secondary antibody was Alexa Fluor 488-conjugated AffiniPure Goat Anti-Rabbit IgG(H+L).