

SERF1A Antibody



PACO59884

Product Information

Size:

50ug

Reactivity:

Human

Source:

Rabbit

Isotype:

IgG

Applications:

ELISA, IHC

Recommended dilutions:

ELISA:1:2000-1:10000, IHC:1:200-1:500

Protein Background:

nervous system development.

Gene ID:

SERF1A

Uniprot

O75920

Synonyms:

Small EDRK-rich factor 1 (Protein 4F5) (h4F5) (SMA modifier 1), SERF1A; SERF1B, FAM2A
SERF1 SMAM1; FAM2B SERF1 SMAM1

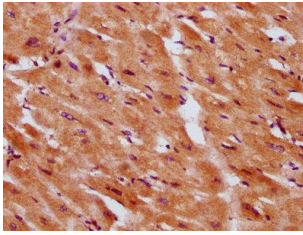
Immunogen:

Recombinant Human Small EDRK-rich factor 1 protein (1-74AA).

Storage:

Preservative: 0.03% Proclin 300. Constituents: 50% Glycerol, 0.01M PBS, pH 7.4

Product Images



IHC image of PACO59884 diluted at 1:300 and staining in paraffin-embedded human heart tissue performed on a Leica Bond™ system. After dewaxing and hydration, antigen retrieval was mediated by high pressure in a citrate buffer (pH 6.0). Section was blocked with 10% normal goat serum 30min at RT. Then primary antibody (1% BSA) was incubated at 4°C overnight. The primary is detected by a biotinylated secondary antibody and visualized using an HRP conjugated SP system.