

PACO59880

Product Information

Size:

50ug

Reactivity:

Human

Source:

Rabbit

Isotype:

IgG

Applications:

ELISA, IHC

Recommended dilutions:

ELISA:1:2000-1:10000, IHC:1:500-1:1000

Protein Background:

Catalyzes the decomposition of L-selenocysteine to L-alanine and elemental selenium.

Gene ID:

SCLY

Uniprot

Q96I15

Synonyms:

Selenocysteine lyase (hSCL) (EC 4.4.1.16), SCLY, SCL

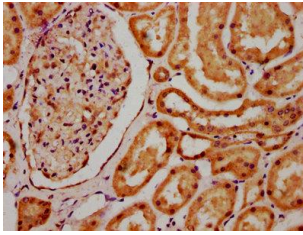
Immunogen:

Recombinant Human Selenocysteine lyase protein (3-138AA).

Storage:

Preservative: 0.03% Proclin 300. Constituents: 50% Glycerol, 0.01M PBS, pH 7.4

Product Images



IHC image of PACO59880 diluted at 1:700 and staining in paraffin-embedded human kidney tissue performed on a Leica Bond™ system. After dewaxing and hydration, antigen retrieval was mediated by high pressure in a citrate buffer (pH 6.0). Section was blocked with 10% normal goat serum 30min at RT. Then primary antibody (1% BSA) was incubated at 4°C overnight. The primary is detected by a biotinylated secondary antibody and visualized using an HRP conjugated SP system.