

IRX6 Antibody



PACO59756

Product Information

Size:

50ug

Reactivity:

Human, Rat

Source:

Rabbit

Isotype:

IgG

Applications:

ELISA, WB, IHC

Recommended dilutions:

ELISA:1:2000-1:10000, WB:1:500-1:5000,
IHC:1:200-1:500

Protein Background:

Gene ID:

IRX6

Uniprot

P78412

Synonyms:

Iroquois-class homeodomain protein IRX-6 (Homeodomain protein IRXB3) (Iroquois homeobox protein 6), IRX6, IRX7 IRXB3

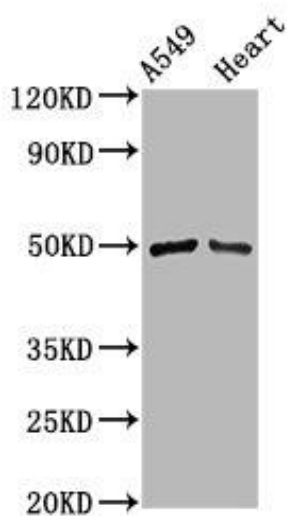
Immunogen:

Recombinant Human Iroquois-class homeodomain protein IRX-6 protein (289-389AA).

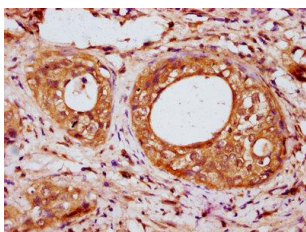
Storage:

Preservative: 0.03% Proclin 300. Constituents: 50% Glycerol, 0.01M PBS, pH 7.4

Product Images



Western Blot. Positive WB detected in: A549 whole cell lysate, Rat heart tissue. All lanes: IRX6 antibody at 3.8 μ g/ml. Secondary. Goat polyclonal to rabbit IgG at 1/50000 dilution. Predicted band size: 49 kDa. Observed band size: 49 kDa.



IHC image of PAC059756 diluted at 1:200 and staining in paraffin-embedded human cervical cancer performed on a Leica BondTM system. After dewaxing and hydration, antigen retrieval was mediated by high pressure in a citrate buffer (pH 6.0). Section was blocked with 10% normal goat serum 30min at RT. Then primary antibody (1% BSA) was incubated at 4°C overnight. The primary is detected by a biotinylated secondary antibody and visualized using an HRP conjugated SP system.