

CHODL Antibody



PACO59696

Product Information

Size:

50ug

Reactivity:

Human

Source:

Rabbit

Isotype:

IgG

Applications:

ELISA, WB, IHC, IF

Recommended dilutions:

ELISA:1:2000-1:10000, WB:1:500-1:5000,
IHC:1:200-1:500, IF:1:50-1:200

Protein Background:

May play a role in the development of the nervous system such as in neurite outgrowth and elongation. May be involved in motor axon growth and guidance.

Gene ID:

CHODL

Uniprot

Q9H9P2

Synonyms:

Chondrolectin (Transmembrane protein MT75), CHODL, C21orf68

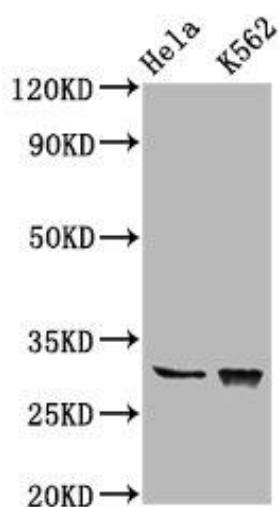
Immunogen:

Recombinant Human Chondrolectin protein (105-206AA).

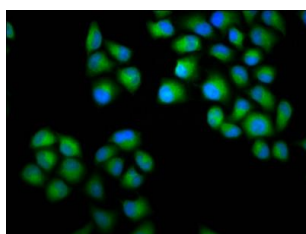
Storage:

Preservative: 0.03% Proclin 300. Constituents: 50% Glycerol, 0.01M PBS, pH 7.4

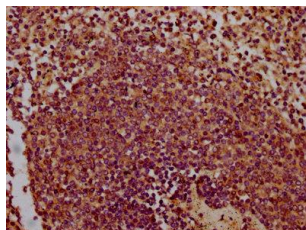
Product Images



Western Blot. Positive WB detected in: HeLa whole cell lysate, K562 whole cell lysate. All lanes: CHODL antibody at 6.2 μ g/ml. Secondary: Goat polyclonal to rabbit IgG at 1/50000 dilution. Predicted band size: 31, 26, 28, 29 kDa. Observed band size: 31 kDa.



Immunofluorescence staining of HeLa cells with PACO59696 at 1:100, counter-stained with DAPI. The cells were fixed in 4% formaldehyde, permeabilized using 0.2% Triton X-100 and blocked in 10% normal Goat Serum. The cells were then incubated with the antibody overnight at 4°C. The secondary antibody was Alexa Fluor 488-conjugated AffiniPure Goat Anti-Rabbit IgG(H+L).



IHC image of PACO59696 diluted at 1:300 and staining in paraffin-embedded human spleen tissue performed on a Leica BondTM system. After dewaxing and hydration, antigen retrieval was mediated by high pressure in a citrate buffer (pH 6.0). Section was blocked with 10% normal goat serum 30min at RT. Then primary antibody (1% BSA) was incubated at 4°C overnight. The primary is detected by a biotinylated secondary antibody and visualized using an HRP conjugated SP system.