

CCT6A Antibody



PACO59688

Product Information

Size:

50ug

Reactivity:

Human

Source:

Rabbit

Isotype:

IgG

Applications:

ELISA, WB

Recommended dilutions:

ELISA:1:2000-1:10000, WB:1:500-1:5000

Protein Background:

Molecular chaperone; assists the folding of proteins upon ATP hydrolysis. Known to play a role, in vitro, in the folding of actin and tubulin.

Gene ID:

CCT6A

Uniprot

P40227

Synonyms:

T-complex protein 1 subunit zeta (TCP-1-zeta) (Acute morphine dependence-related protein 2) (CCT-zeta-1) (HTR3) (Tcp20), CCT6A, CCT6 CCTZ

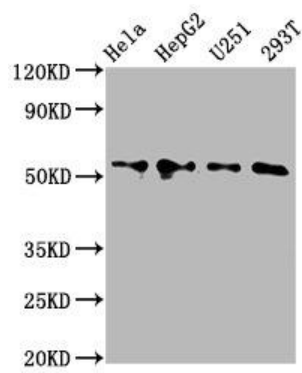
Immunogen:

Recombinant Human T-complex protein 1 subunit zeta protein (80-250AA).

Storage:

Preservative: 0.03% Proclin 300. Constituents: 50% Glycerol, 0.01M PBS, pH 7.4

Product Images



Western Blot. Positive WB detected in: HeLa whole cell lysate, HepG2 whole cell lysate, U251 whole cell lysate, 293T whole cell lysate. All lanes: CCT6A antibody at 4.2 μ g/ml. Secondary. Goat polyclonal to rabbit IgG at 1/50000 dilution. Predicted band size: 59, 54 kDa. Observed band size: 59 kDa.