

MKL2 Antibody



PACO59561

Product Information

Size:

50ug

Reactivity:

Human, Mouse

Source:

Rabbit

Isotype:

IgG

Applications:

ELISA, WB, IHC

Recommended dilutions:

ELISA:1:2000-1:10000, WB:1:500-1:5000,
IHC:1:500-1:1000

Protein Background:

Acts as a transcriptional coactivator of serum response factor (SRF). Required for skeletal myogenic differentiation.

Gene ID:

MKL2

Uniprot

Q9ULH7

Synonyms:

MKL/myocardin-like protein 2 (Megakaryoblastic leukemia 2) (Myocardin-related transcription factor B) (MRTF-B), MKL2, KIAA1243 MRTFB

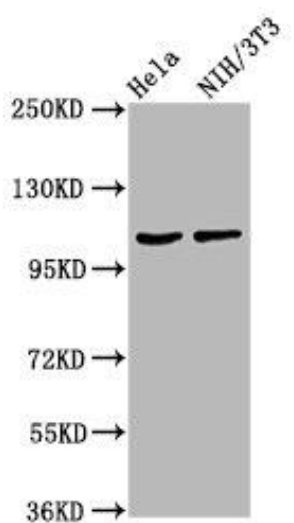
Immunogen:

Recombinant Human MKL/myocardin-like protein 2 protein (164-313AA).

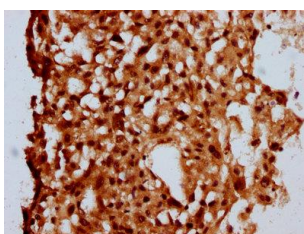
Storage:

Preservative: 0.03% Proclin 300. Constituents: 50% Glycerol, 0.01M PBS, pH 7.4

Product Images



Western Blot. Positive WB detected in: HeLa whole cell lysate, NIH/3T3 whole cell lysate. All lanes: MKL2 antibody at 4.2µg/ml. Secondary. Goat polyclonal to rabbit IgG at 1/50000 dilution. Predicted band size: 119, 43, 52, 115, 120 kDa. Observed band size: 119 kDa.



IHC image of PACO59561 diluted at 1:500 and staining in paraffin-embedded human melanoma performed on a Leica Bond™ system. After dewaxing and hydration, antigen retrieval was mediated by high pressure in a citrate buffer (pH 6.0). Section was blocked with 10% normal goat serum 30min at RT. Then primary antibody (1% BSA) was incubated at 4°C overnight. The primary is detected by a biotinylated secondary antibody and visualized using an HRP conjugated SP system.