

# FAM234A Antibody



PACO59521

---

## Product Information

**Size:**

50ug

**Reactivity:**

Human

**Source:**

Rabbit

**Isotype:**

IgG

**Applications:**

ELISA, IF

**Recommended dilutions:**

ELISA:1:2000-1:10000, IF:1:50-1:200

**Protein Background:**

cell surface, extracellular exosome.

**Gene ID:**

FAM234A

**Uniprot**

Q9H0X4

**Synonyms:**

Protein FAM234A (Protein ITFG3), FAM234A, C16orf9 ITFG3

**Immunogen:**

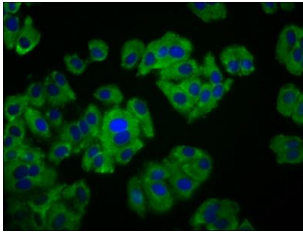
Recombinant Human Protein FAM234A protein (115-251AA).

**Storage:**

Preservative: 0.03% Proclin 300. Constituents: 50% Glycerol, 0.01M PBS, pH 7.4

## Product Images

---



Immunofluorescence staining of HepG2 cells with PACO59521 at 1:133, counter-stained with DAPI. The cells were fixed in 4% formaldehyde, permeabilized using 0.2% Triton X-100 and blocked in 10% normal Goat Serum. The cells were then incubated with the antibody overnight at 4°C. The secondary antibody was Alexa Fluor 488-conjugated AffiniPure Goat Anti-Rabbit IgG(H+L).