

NFKBIL1 Antibody



PACO59497

Product Information

Size:

50ug

Reactivity:

Human

Source:

Rabbit

Isotype:

IgG

Applications:

ELISA, IHC

Recommended dilutions:

ELISA:1:2000-1:10000, IHC:1:500-1:1000

Protein Background:

Involved in the regulation of innate immune response. Acts as negative regulator of Toll-like receptor and interferon-regulatory factor (IRF) signaling pathways. Contributes to the negative regulation of transcriptional activation of NF-kappa-B target genes in response to endogenous proinflammatory stimuli.

Gene ID:

NFKBIL1

Uniprot

Q9UBC1

Synonyms:

NF-kappa-B inhibitor-like protein 1 (Inhibitor of κ B-like protein) (I-kappa-B-like protein) (IkappaBL) (Nuclear factor of κ light polypeptide gene enhancer in B-cells inhibitor-like 1), NFKBIL1, IKBL

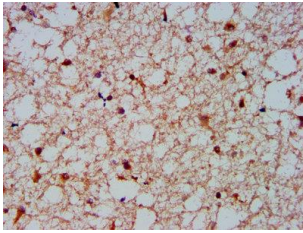
Immunogen:

Recombinant Human NF-kappa-B inhibitor-like protein 1 protein (185-312AA).

Storage:

Preservative: 0.03% Proclin 300. Constituents: 50% Glycerol, 0.01M PBS, pH 7.4

Product Images



IHC image of PACO59497 diluted at 1:600 and staining in paraffin-embedded human brain tissue performed on a Leica Bond™ system. After dewaxing and hydration, antigen retrieval was mediated by high pressure in a citrate buffer (pH 6.0). Section was blocked with 10% normal goat serum 30min at RT. Then primary antibody (1% BSA) was incubated at 4°C overnight. The primary is detected by a biotinylated secondary antibody and visualized using an HRP conjugated SP system.