

# DLGAP2 Antibody



PACO59461

---

## Product Information

**Size:**

50ug

**Reactivity:**

Human

**Source:**

Rabbit

**Isotype:**

IgG

**Applications:**

ELISA, IF

**Recommended dilutions:**

ELISA:1:2000-1:10000, IF:1:50-1:200

**Protein Background:**

May play a role in the molecular organization of synapses and neuronal cell signaling. Could be an adapter protein linking ion channel to the subsynaptic cytoskeleton. May induce enrichment of PSD-95/SAP90 at the plasma membrane.

**Gene ID:**

DLGAP2

**Uniprot**

Q9P1A6

**Synonyms:**

Disks large-associated protein 2 (DAP-2) (PSD-95/SAP90-binding protein 2) (SAP90/PSD-95-associated protein 2) (SAPAP2), DLGAP2, C8orf68 DAP2 ERICH1-AS1

**Immunogen:**

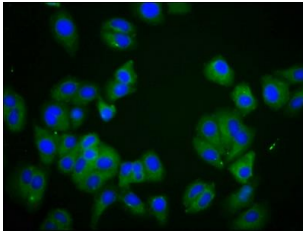
Recombinant Human Disks large-associated protein 2 protein (31-139AA).

**Storage:**

Preservative: 0.03% Proclin 300. Constituents: 50% Glycerol, 0.01M PBS, pH 7.4

## Product Images

---



Immunofluorescence staining of HepG2 cells with PACO59461 at 1:166, counter-stained with DAPI. The cells were fixed in 4% formaldehyde, permeabilized using 0.2% Triton X-100 and blocked in 10% normal Goat Serum. The cells were then incubated with the antibody overnight at 4°C. The secondary antibody was Alexa Fluor 488-conjugated AffiniPure Goat Anti-Rabbit IgG(H+L).