

# CNNM2 Antibody



PACO59409

---

## Product Information

**Size:**

50ug

**Reactivity:**

Human

**Source:**

Rabbit

**Isotype:**

IgG

**Applications:**

ELISA, IHC, IF

**Recommended dilutions:**

ELISA:1:2000-1:10000, IHC:1:200-1:500,  
IF:1:50-1:200

**Protein Background:**

Divalent metal cation transporter. Mediates transport of divalent metal cations in an order of Mg(2+) > Co(2+) > Mn(2+) > Sr(2+) > Ba(2+) > Cu(2+) > Fe(2+).

**Gene ID:**

CNNM2

**Uniprot**

Q9H8M5

**Synonyms:**

Metal transporter CNNM2 (Ancient conserved domain-containing protein 2) (Cyclin-M2), CNNM2, ACDP2

**Immunogen:**

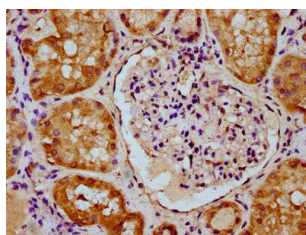
Recombinant Human Metal transporter CNNM2 protein (739-875AA).

**Storage:**

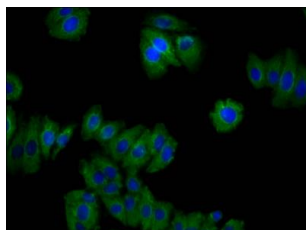
Preservative: 0.03% Proclin 300. Constituents: 50% Glycerol, 0.01M PBS, pH 7.4

## Product Images

---



IHC image of PACO59409 diluted at 1:300 and staining in paraffin-embedded human kidney tissue performed on a Leica Bond™ system. After dewaxing and hydration, antigen retrieval was mediated by high pressure in a citrate buffer (pH 6.0). Section was blocked with 10% normal goat serum 30min at RT. Then primary antibody (1% BSA) was incubated at 4°C overnight. The primary is detected by a biotinylated secondary antibody and visualized using an HRP conjugated SP system.



Immunofluorescence staining of HepG2 cells with PACO59409 at 1:100, counter-stained with DAPI. The cells were fixed in 4% formaldehyde, permeabilized using 0.2% Triton X-100 and blocked in 10% normal Goat Serum. The cells were then incubated with the antibody overnight at 4°C. The secondary antibody was Alexa Fluor 488-conjugated AffiniPure Goat Anti-Rabbit IgG(H+L).