

PACO59381

Product Information

Size:

50ug

Reactivity:

Human, Mouse, Rat

Source:

Rabbit

Isotype:

IgG

Applications:

ELISA, WB, IHC

Recommended dilutions:

ELISA:1:2000-1:10000, WB:1:500-1:5000,
IHC:1:200-1:500

Protein Background:

Hydrolyzes inorganic pyrophosphate. This activity is essential for correct regulation of mitochondrial membrane potential, and mitochondrial organization and function.

Gene ID:

PPA2

Uniprot

Q9H2U2

Synonyms:

Inorganic pyrophosphatase 2, mitochondrial (EC 3.6.1.1) (Pyrophosphatase SID6-306)
(Pyrophosphate phospho-hydrolase 2) (PPase 2), PPA2

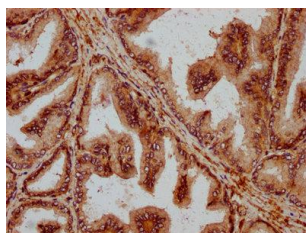
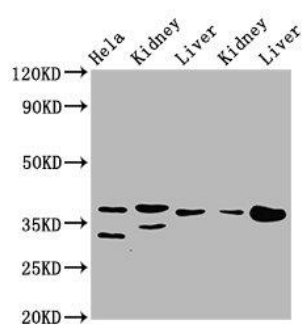
Immunogen:

Recombinant Human Inorganic pyrophosphatase 2, mitochondrial protein (180-298AA).

Storage:

Preservative: 0.03% Proclin 300. Constituents: 50% Glycerol, 0.01M PBS, pH 7.4

Product Images



Western Blot. Positive WB detected in: HeLa whole cell lysate, Rat kidney tissue, Rat liver tissue, Mouse kidney tissue, Mouse liver tissue. All lanes: PPA2 antibody at 3.1 μ g/ml. Secondary. Goat polyclonal to rabbit IgG at 1/50000 dilution. Predicted band size: 38, 40, 35, 19, 26 kDa. Observed band size: 38 kDa.

IHC image of PACO59381 diluted at 1:200 and staining in paraffin-embedded human prostate tissue performed on a Leica BondTM system. After dewaxing and hydration, antigen retrieval was mediated by high pressure in a citrate buffer (pH 6.0). Section was blocked with 10% normal goat serum 30min at RT. Then primary antibody (1% BSA) was incubated at 4 $^{\circ}$ C overnight. The primary is detected by a biotinylated secondary antibody and visualized using an HRP conjugated SP system.