

# SFR1 Antibody



PACO59205

---

## Product Information

**Size:**

50ug

**Reactivity:**

Human

**Source:**

Rabbit

**Isotype:**

IgG

**Applications:**

ELISA, IHC

**Recommended dilutions:**

ELISA:1:2000-1:10000, IHC:1:200-1:500

**Protein Background:**

Component of the SWI5-SFR1 complex, a complex required for double-strand break repair via homologous recombination. Acts as a transcriptional modulator for ESR1.

**Gene ID:**

SFR1

**Uniprot**

Q86XK3

**Synonyms:**

Swi5-dependent recombination DNA repair protein 1 homolog (Meiosis protein 5 homolog), SFR1, C10orf78 MEI5 MEIR5

**Immunogen:**

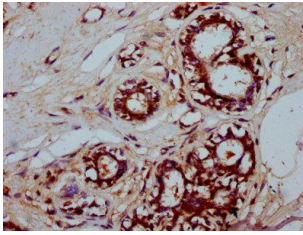
Recombinant Human Swi5-dependent recombination DNA repair protein 1 homolog protein (5-93AA).

**Storage:**

Preservative: 0.03% Proclin 300. Constituents: 50% Glycerol, 0.01M PBS, pH 7.4

## Product Images

---



IHC image of PACO59205 diluted at 1:200 and staining in paraffin-embedded human breast cancer performed on a Leica Bond™ system. After dewaxing and hydration, antigen retrieval was mediated by high pressure in a citrate buffer (pH 6.0). Section was blocked with 10% normal goat serum 30min at RT. Then primary antibody (1% BSA) was incubated at 4°C overnight. The primary is detected by a biotinylated secondary antibody and visualized using an HRP conjugated SP system.