

Product Information

Size:

50ug

Reactivity:

Human

Source:

Rabbit

Isotype:

IgG

Applications:

ELISA, IHC, IF

Recommended dilutions:

ELISA:1:2000-1:10000, IHC:1:200-1:500,
IF:1:50-1:200

Protein Background:

extracellular exosome, nucleus, BMP signaling pathway, cell migration involved in gastrulation, craniofacial suture morphogenesis, determination of digestive tract left/right asymmetry, determination of heart left/right asymmetry, embryonic heart tube left/right pattern formation, embryonic heart tube morphogenesis, embryonic limb morphogenesis.

Gene ID:

MEGF8

Uniprot

Q7Z7M0

Synonyms:

Multiple epidermal growth factor-like domains protein 8 (Multiple EGF-like domains protein 8) (Epidermal growth factor-like protein 4) (EGF-like protein 4), MEGF8, C19orf49 EGFL4 KIAA0817

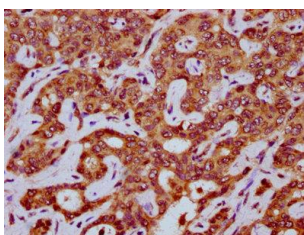
Immunogen:

Recombinant Human Multiple epidermal growth factor-like domains protein 8 protein (495-663AA).

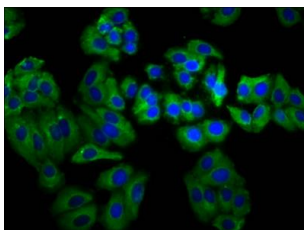
Storage:

Preservative: 0.03% Proclin 300. Constituents: 50% Glycerol, 0.01M PBS, pH 7.4

Product Images



IHC image of PACO59193 diluted at 1:200 and staining in paraffin-embedded human liver cancer performed on a Leica Bond™ system. After dewaxing and hydration, antigen retrieval was mediated by high pressure in a citrate buffer (pH 6.0). Section was blocked with 10% normal goat serum 30min at RT. Then primary antibody (1% BSA) was incubated at 4°C overnight. The primary is detected by a biotinylated secondary antibody and visualized using an HRP conjugated SP system.



Immunofluorescence staining of HepG2 cells with PACO59193 at 1:66, counter-stained with DAPI. The cells were fixed in 4% formaldehyde, permeabilized using 0.2% Triton X-100 and blocked in 10% normal Goat Serum. The cells were then incubated with the antibody overnight at 4°C. The secondary antibody was Alexa Fluor 488-conjugated AffiniPure Goat Anti-Rabbit IgG(H+L).