

Product Information

Size:

50ug

Reactivity:

Human

Source:

Rabbit

Isotype:

IgG

Applications:

ELISA, IHC

Recommended dilutions:

ELISA:1:2000-1:10000, IHC:1:500-1:1000

Protein Background:

Monothiol glutaredoxin involved in the biogenesis of iron-sulfur clusters. Involved in protein lipoylation, acting in the pathway that provides an iron-sulfur cluster to lipoate synthase. Required for normal iron homeostasis. Required for normal regulation of hemoglobin synthesis by the iron-sulfur protein ACO1. May protect cells against apoptosis due to reactive oxygen species and oxidative stress.

Gene ID:

GLRX5

Uniprot

Q86SX6

Synonyms:

Glutaredoxin-related protein 5, mitochondrial (Monothiol glutaredoxin-5), GLRX5, C14orf87

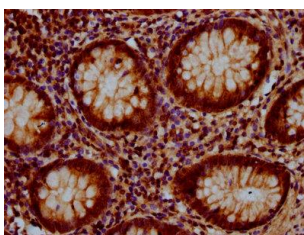
Immunogen:

Recombinant Human Glutaredoxin-related protein 5, mitochondrial protein (32-157AA).

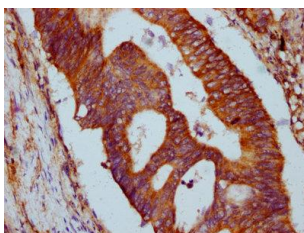
Storage:

Preservative: 0.03% Proclin 300. Constituents: 50% Glycerol, 0.01M PBS, pH 7.4

Product Images



IHC image of PACO59177 diluted at 1:500 and staining in paraffin-embedded human appendix tissue performed on a Leica Bond™ system. After dewaxing and hydration, antigen retrieval was mediated by high pressure in a citrate buffer (pH 6.0). Section was blocked with 10% normal goat serum 30min at RT. Then primary antibody (1% BSA) was incubated at 4°C overnight. The primary is detected by a biotinylated secondary antibody and visualized using an HRP conjugated SP system.



IHC image of PACO59177 diluted at 1:500 and staining in paraffin-embedded human colon cancer performed on a Leica Bond™ system. After dewaxing and hydration, antigen retrieval was mediated by high pressure in a citrate buffer (pH 6.0). Section was blocked with 10% normal goat serum 30min at RT. Then primary antibody (1% BSA) was incubated at 4°C overnight. The primary is detected by a biotinylated secondary antibody and visualized using an HRP conjugated SP system.