

PACO59121

Product Information

Size:

50ug

Reactivity:

Human

Source:

Rabbit

Isotype:

IgG

Applications:

ELISA, IF

Recommended dilutions:

ELISA:1:2000-1:10000, IF:1:200-1:200

Protein Background:

Precursors of the cornified envelope of the stratum corneum.

Gene ID:

LCE3C

Uniprot

Q5T5A8

Synonyms:

Late cornified envelope protein 3C (Late envelope protein 15) (Small proline-rich-like epidermal differentiation complex protein 3A), LCE3C, LEP15 SPRL3A

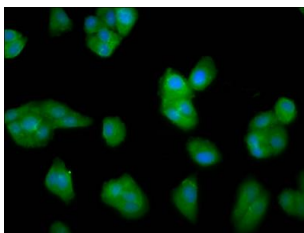
Immunogen:

Recombinant Human Late cornified envelope protein 3C protein (1-94AA).

Storage:

Preservative: 0.03% Proclin 300. Constituents: 50% Glycerol, 0.01M PBS, pH 7.4

Product Images



Immunofluorescence staining of HepG2 cells with PACO59121 at 1:33, counter-stained with DAPI. The cells were fixed in 4% formaldehyde, permeabilized using 0.2% Triton X-100 and blocked in 10% normal Goat Serum. The cells were then incubated with the antibody overnight at 4°C. The secondary antibody was Alexa Fluor 488-conjugated AffiniPure Goat Anti-Rabbit IgG(H+L).