

Product Information

Size:

50ug

Reactivity:

Human

Source:

Rabbit

Isotype:

IgG

Applications:

ELISA, WB, IHC, IF

Recommended dilutions:

ELISA:1:2000-1:10000, WB:1:500-1:5000,
IHC:1:200-1:500, IF:1:50-1:200

Protein Background:

Subunit of cyclic nucleotide-gated (CNG) channels, nonselective cation channels, which play important roles in both visual and olfactory signal transduction. When associated with CNGA1, it is involved in the regulation of ion flow into the rod photoreceptor outer segment (ROS), in response to light-induced alteration of the levels of intracellular cGMP.

Gene ID:

CNGB1

Uniprot

Q14028

Synonyms:

Cyclic nucleotide-gated cation channel beta-1 (Cyclic nucleotide-gated cation channel 4) (CNG channel 4) (CNG-4) (CNG4) (Cyclic nucleotide-gated cation channel gamma) (Cyclic nucleotide-gated cation channel modulatory subunit) (Cyclic nucleotide-gated channel beta-1) (CNG channel beta-1) (Glutamic acid, rich protein) (GARP), CNGB1, CNCG2 CNCG3L CNCG4 RCNC2

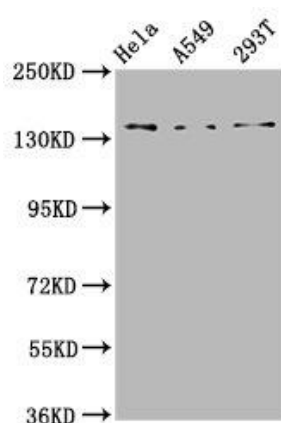
Immunogen:

Recombinant Human Cyclic nucleotide-gated cation channel beta-1 protein (131-253AA).

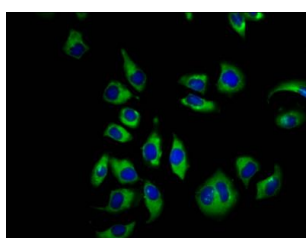
Storage:

Preservative: 0.03% Proclin 300. Constituents: 50% Glycerol, 0.01M PBS, pH 7.4

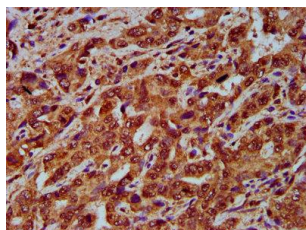
Product Images



Western Blot. Positive WB detected in: HeLa whole cell lysate, A549 whole cell lysate, 293T whole cell lysate. All lanes: CNGB1 antibody at 4.6µg/ml. Secondary: Goat polyclonal to rabbit IgG at 1/50000 dilution. Predicted band size: 140, 71, 33 kDa. Observed band size: 140 kDa.



Immunofluorescence staining of A549 cells with PACO59085 at 1:66, counter-stained with DAPI. The cells were fixed in 4% formaldehyde, permeabilized using 0.2% Triton X-100 and blocked in 10% normal Goat Serum. The cells were then incubated with the antibody overnight at 4°C. The secondary antibody was Alexa Fluor 488-conjugated AffiniPure Goat Anti-Rabbit IgG(H+L).



IHC image of PACO59085 diluted at 1:200 and staining in paraffin-embedded human liver cancer performed on a Leica Bond™ system. After dewaxing and hydration, antigen retrieval was mediated by high pressure in a citrate buffer (pH 6.0). Section was blocked with 10% normal goat serum 30min at RT. Then primary antibody (1% BSA) was incubated at 4°C overnight. The primary is detected by a biotinylated secondary antibody and visualized using an HRP conjugated SP system.