

SH3BP1 Antibody



PACO59021

Product Information

Size:

50ug

Reactivity:

Human

Source:

Rabbit

Isotype:

IgG

Applications:

ELISA, IHC

Recommended dilutions:

ELISA:1:2000-1:10000, IHC:1:200-1:500

Protein Background:

Binds differentially to the SH3 domains of certain proteins of signal transduction pathways. This protein binds preferentially to the ABL1 proto-oncogene, SRC and GRB2. Shows GAP activity for Rac-related proteins but not for Rho- or Ras-related proteins. It inhibits PDGF-induced membrane ruffling mediated by Rac.

Gene ID:

SH3BP1

Uniprot

Q9Y3L3

Synonyms:

SH3 domain-binding protein 1, SH3BP1

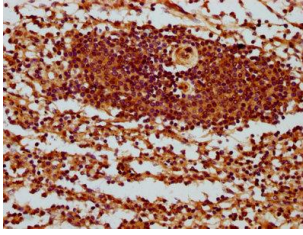
Immunogen:

Recombinant Human SH3 domain-binding protein 1 protein (161-266AA).

Storage:

Preservative: 0.03% Proclin 300. Constituents: 50% Glycerol, 0.01M PBS, pH 7.4

Product Images



IHC image of PACO59021 diluted at 1:400 and staining in paraffin-embedded human spleen tissue performed on a Leica Bond™ system. After dewaxing and hydration, antigen retrieval was mediated by high pressure in a citrate buffer (pH 6.0). Section was blocked with 10% normal goat serum 30min at RT. Then primary antibody (1% BSA) was incubated at 4°C overnight. The primary is detected by a biotinylated secondary antibody and visualized using an HRP conjugated SP system.