

## Product Information

**Size:**

50ug

**Reactivity:**

Human, Mouse

**Source:**

Rabbit

**Isotype:**

IgG

**Applications:**

ELISA, WB

**Recommended dilutions:**

ELISA:1:2000-1:10000, WB:1:500-1:5000

**Protein Background:**

Component of the intraflagellar transport (IFT) complex B required for transport of proteins in the motile cilium. Required for transport of specific ciliary cargo proteins related to motility, while it is neither required for IFT complex B assembly or motion nor for cilium assembly. Required for efficient coupling between the accumulation of GLI3 at the ciliary tip and its dissociation from SUFU.

**Gene ID:**

TTC26

**Uniprot**

A0AVF1

**Synonyms:**

Intraflagellar transport protein 56 (Tetratricopeptide repeat protein 26) (TPR repeat protein 26), TTC26, IFT56

**Immunogen:**

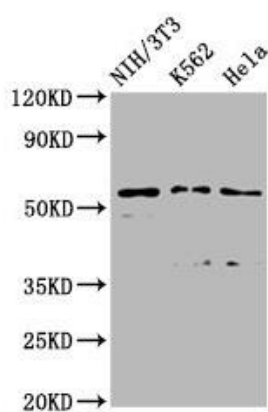
Recombinant Human Intraflagellar transport protein 56 protein (5-122AA).

**Storage:**

Preservative: 0.03% Proclin 300. Constituents: 50% Glycerol, 0.01M PBS, pH 7.4

## Product Images

---



Western Blot. Positive WB detected in: NIH/3T3 whole cell lysate, K562 whole cell lysate, HeLa whole cell lysate. All lanes: TTC26 antibody at 2.45 $\mu$ g/ml. Secondary. Goat polyclonal to rabbit IgG at 1/50000 dilution. Predicted band size: 65, 57, 61 kDa. Observed band size: 57 kDa.