

PACO58957

Product Information

Size:

50ug

Reactivity:

Human

Source:

Rabbit

Isotype:

IgG

Applications:

ELISA, IF

Recommended dilutions:

ELISA:1:2000-1:10000, IF:1:50-1:200

Protein Background:

Intestinal trehalase is probably involved in the hydrolysis of ingested trehalose.

Gene ID:

TREH

Uniprot

O43280

Synonyms:

Trehalase (EC 3.2.1.28) (Alpha, alpha-trehalase) (Alpha, alpha-trehalose glucohydrolase), TREH, TREA

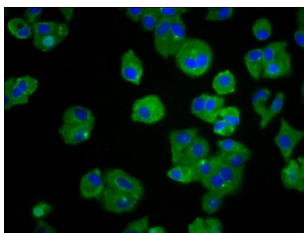
Immunogen:

Recombinant Human Trehalase protein (373-507AA).

Storage:

Preservative: 0.03% Proclin 300. Constituents: 50% Glycerol, 0.01M PBS, pH 7.4

Product Images



Immunofluorescence staining of HepG2 cells with PACO58957 at 1:66, counter-stained with DAPI. The cells were fixed in 4% formaldehyde, permeabilized using 0.2% Triton X-100 and blocked in 10% normal Goat Serum. The cells were then incubated with the antibody overnight at 4°C. The secondary antibody was Alexa Fluor 488-conjugated AffiniPure Goat Anti-Rabbit IgG(H+L).