

PACO58853

Product Information

Size:

50ug

Reactivity:

Human

Source:

Rabbit

Isotype:

IgG

Applications:

ELISA, IHC

Recommended dilutions:

ELISA:1:2000-1:10000, IHC:1:200-1:500

Protein Background:

Probable serine peptidase whose precise substrate specificity remains unclear. Does not cleave peptides after a arginine or lysine residue. May play a role in the regulation of synaptic vesicle exocytosis.

Gene ID:

PREPL

Uniprot

Q4J6C6

Synonyms:

Prolyl endopeptidase-like (EC 3.4.21) (Prolylendopeptidase-like), PREPL, KIAA0436

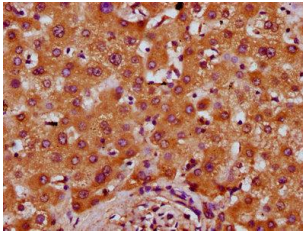
Immunogen:

Recombinant Human Prolyl endopeptidase-like protein (604-699AA).

Storage:

Preservative: 0.03% Proclin 300. Constituents: 50% Glycerol, 0.01M PBS, pH 7.4

Product Images



IHC image of PACO58853 diluted at 1:400 and staining in paraffin-embedded human liver tissue performed on a Leica Bond™ system. After dewaxing and hydration, antigen retrieval was mediated by high pressure in a citrate buffer (pH 6.0). Section was blocked with 10% normal goat serum 30min at RT. Then primary antibody (1% BSA) was incubated at 4°C overnight. The primary is detected by a biotinylated secondary antibody and visualized using an HRP conjugated SP system.