

# PHACTR1 Antibody



PACO58845

---

## Product Information

**Size:**

50ug

**Reactivity:**

Human, Mouse, Rat

**Source:**

Rabbit

**Isotype:**

IgG

**Applications:**

ELISA, WB, IHC, IF

**Recommended dilutions:**

ELISA:1:2000-1:10000, WB:1:500-1:5000,  
IHC:1:200-1:500, IF:1:50-1:200

**Protein Background:**

Binds actin monomers (G actin) and plays a role in the reorganization of the actin cytoskeleton and in formation of actin stress fibers. Plays a role in cell motility. Plays a role in the formation of tubules by endothelial cells. Regulates PPP1CA activity. Required for normal cell survival.

**Gene ID:**

PHACTR1

**Uniprot**

Q9C0D0

**Synonyms:**

Phosphatase and actin regulator 1, PHACTR1, KIAA1733 RPEL1

**Immunogen:**

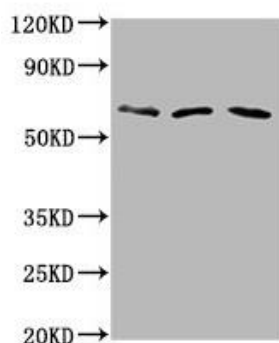
Recombinant Human Phosphatase and actin regulator 1 protein (263-387AA).

**Storage:**

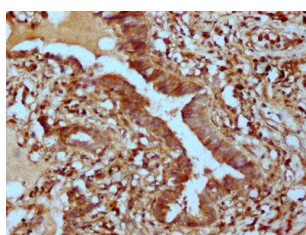
Preservative: 0.03% Proclin 300. Constituents: 50% Glycerol, 0.01M PBS, pH 7.4

## Product Images

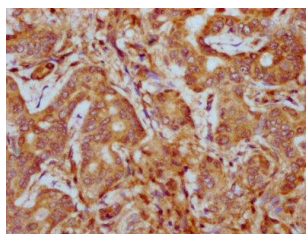
---



Western Blot. Positive WB detected in: Hela whole cell lysate, Rat brain tissue, Mouse brain tissue. All lanes: PHACTR1 antibody at 6 $\mu$ g/ml. Secondary. Goat polyclonal to rabbit IgG at 1/50000 dilution. Predicted band size: 67, 55 kDa. Observed band size: 67 kDa.



IHC image of PACO58845 diluted at 1:400 and staining in paraffin-embedded human lung tissue performed on a Leica Bond<sup>TM</sup> system. After dewaxing and hydration, antigen retrieval was mediated by high pressure in a citrate buffer (pH 6.0). Section was blocked with 10% normal goat serum 30min at RT. Then primary antibody (1% BSA) was incubated at 4°C overnight. The primary is detected by a biotinylated secondary antibody and visualized using an HRP conjugated SP system.



IHC image of PACO58845 diluted at 1:400 and staining in paraffin-embedded human liver cancer performed on a Leica Bond<sup>TM</sup> system. After dewaxing and hydration, antigen retrieval was mediated by high pressure in a citrate buffer (pH 6.0). Section was blocked with 10% normal goat serum 30min at RT. Then primary antibody (1% BSA) was incubated at 4°C overnight. The primary is detected by a biotinylated secondary antibody and visualized using an HRP conjugated SP system.