

NLRP6 Antibody



PACO58825

Product Information

Size:

50ug

Reactivity:

Human

Source:

Rabbit

Isotype:

IgG

Applications:

ELISA, IHC, IF

Recommended dilutions:

ELISA:1:2000-1:10000, IHC:1:200-1:500,
IF:1:50-1:200

Protein Background:**Gene ID:**

NLRP6

Uniprot

P59044

Synonyms:

NACHT, LRR and PYD domains-containing protein 6 (Angiotensin II/vasopressin receptor) (PYRIN-containing APAF1-like protein 5), NLRP6, NALP6 PYPAF5

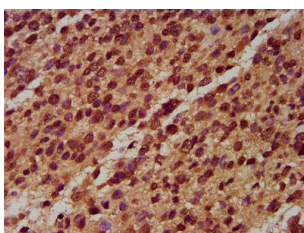
Immunogen:

Recombinant Human NACHT, LRR and PYD domains-containing protein 6 protein (154-306AA).

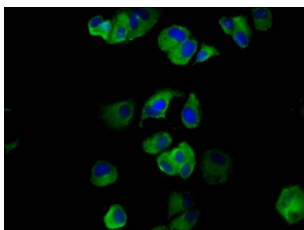
Storage:

Preservative: 0.03% Proclin 300. Constituents: 50% Glycerol, 0.01M PBS, pH 7.4

Product Images



IHC image of PACO58825 diluted at 1:400 and staining in paraffin-embedded human glioma performed on a Leica BondTM system. After dewaxing and hydration, antigen retrieval was mediated by high pressure in a citrate buffer (pH 6.0). Section was blocked with 10% normal goat serum 30min at RT. Then primary antibody (1% BSA) was incubated at 4°C overnight. The primary is detected by a biotinylated secondary antibody and visualized using an HRP conjugated SP system.



Immunofluorescence staining of MCF-7 cells with PACO58825 at 1:133, counter-stained with DAPI. The cells were fixed in 4% formaldehyde, permeabilized using 0.2% Triton X-100 and blocked in 10% normal Goat Serum. The cells were then incubated with the antibody overnight at 4°C. The secondary antibody was Alexa Fluor 488-conjugated AffiniPure Goat Anti-Rabbit IgG(H+L).