

PACO58725

---

## Product Information

**Size:**

50ug

**Reactivity:**

Human

**Source:**

Rabbit

**Isotype:**

IgG

**Applications:**

ELISA, IHC

**Recommended dilutions:**

ELISA:1:2000-1:10000, IHC:1:500-1:1000

**Protein Background:**

Plays a role in the transport of cargos that are too large to fit into COPII-coated vesicles and require specific mechanisms to be incorporated into membrane-bound carriers and exported from the endoplasmic reticulum. This protein is required for collagen VII (COL7A1) secretion by loading COL7A1 into transport carriers and recruiting PREB/SEC12 at the endoplasmic reticulum exit sites.

**Gene ID:**

CTAGE5

**Uniprot**

O15320

**Synonyms:**

Endoplasmic reticulum export factor CTAGE5 (CTAGE family member 5 ER export factor) (Protein cTAGE-5) (Meningioma-expressed antigen 6/11), CTAGE5, MEA11 MEA6 MGEA11 MGEA6

**Immunogen:**

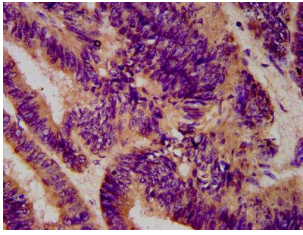
Recombinant Human Endoplasmic reticulum export factor CTAGE5 protein (515-632AA).

**Storage:**

Preservative: 0.03% Proclin 300. Constituents: 50% Glycerol, 0.01M PBS, pH 7.4

## Product Images

---



IHC image of PACO58725 diluted at 1:600 and staining in paraffin-embedded human colon cancer performed on a Leica Bond™ system. After dewaxing and hydration, antigen retrieval was mediated by high pressure in a citrate buffer (pH 6.0). Section was blocked with 10% normal goat serum 30min at RT. Then primary antibody (1% BSA) was incubated at 4°C overnight. The primary is detected by a biotinylated secondary antibody and visualized using an HRP conjugated SP system.