

KLF13 Antibody



PACO58612

Product Information

Size:

50ug

Reactivity:

Human

Source:

Rabbit

Isotype:

IgG

Applications:

ELISA, WB, IHC

Recommended dilutions:

ELISA:1:2000-1:10000, WB:1:500-1:5000,
IHC:1:200-1:500

Protein Background:

Represses transcription by binding to the BTE site, a GC-rich DNA element, in competition with the activator SP1. It also represses transcription by interacting with the corepressor Sin3A and HDAC1. Activates RANTES expression in T-cells.

Gene ID:

KLF13

Uniprot

Q9Y2Y9

Synonyms:

Krueppel-like factor 13 (Basic transcription element-binding protein 3) (BTE-binding protein 3) (Novel Sp1-like zinc finger transcription factor 1) (RANTES factor of late activated T-lymphocytes 1) (RFLAT-1) (Transcription factor BTEB3) (Transcription factor NSLP1), KLF13, BTEB3 NSLP1

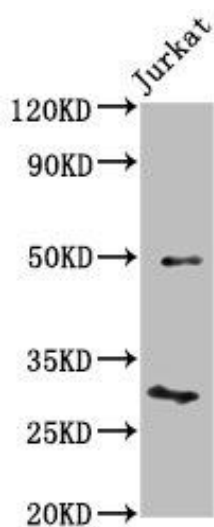
Immunogen:

Recombinant Human Krueppel-like factor 13 protein (26-147AA).

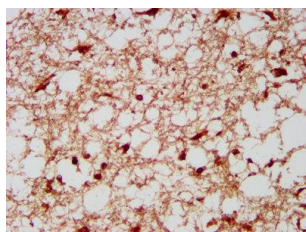
Storage:

Preservative: 0.03% Proclin 300. Constituents: 50% Glycerol, 0.01M PBS, pH 7.4

Product Images



Western Blot. Positive WB detected in: Jurkat whole cell lysate. All lanes: KLF13 antibody at 4.2 μ g/ml. Secondary. Goat polyclonal to rabbit IgG at 1/50000 dilution. Predicted band size: 32 kDa. Observed band size: 32 kDa.



IHC image of PACO58612 diluted at 1:300 and staining in paraffin-embedded human brain tissue performed on a Leica BondTM system. After dewaxing and hydration, antigen retrieval was mediated by high pressure in a citrate buffer (pH 6.0). Section was blocked with 10% normal goat serum 30min at RT. Then primary antibody (1% BSA) was incubated at 4°C overnight. The primary is detected by a biotinylated secondary antibody and visualized using an HRP conjugated SP system.