

KIFC1 Antibody



PACO58504

Product Information

Size:

50ug

Reactivity:

Human

Source:

Rabbit

Isotype:

IgG

Applications:

ELISA, IF

Recommended dilutions:

ELISA:1:2000-1:10000, IF:1:200-1:500

Protein Background:

Minus end-directed microtubule-dependent motor required for bipolar spindle formation. May contribute to movement of early endocytic vesicles. Regulates cilium formation and structure.

Gene ID:

KIFC1

Uniprot

Q9BW19

Synonyms:

Kinesin-like protein KIFC1 (Kinesin-like protein 2) (Kinesin-related protein HSET), KIFC1, HSET KNSL2

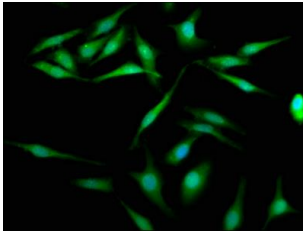
Immunogen:

Recombinant Human Kinesin-like protein KIFC1 protein (337-498AA).

Storage:

Preservative: 0.03% Proclin 300. Constituents: 50% Glycerol, 0.01M PBS, pH 7.4

Product Images



Immunofluorescence staining of HeLa cells with PACO58504 at 1:200, counter-stained with DAPI. The cells were fixed in 4% formaldehyde, permeabilized using 0.2% Triton X-100 and blocked in 10% normal Goat Serum. The cells were then incubated with the antibody overnight at 4°C. The secondary antibody was Alexa Fluor 488-conjugated AffiniPure Goat Anti-Rabbit IgG(H+L).