

CEP250 Antibody



PACO58500

Product Information

Size:

50ug

Reactivity:

Human

Source:

Rabbit

Isotype:

IgG

Applications:

ELISA, IF

Recommended dilutions:

ELISA:1:2000-1:10000, IF:1:50-1:200

Protein Background:

Probably plays an important role in centrosome cohesion during interphase.

Gene ID:

CEP250

Uniprot

Q9BV73

Synonyms:

Centrosome-associated protein CEP250 (250 kDa centrosomal protein) (Cep250) (Centrosomal Nek2-associated protein 1) (C-Nap1) (Centrosomal protein 2), CEP250, CEP2 CNAP1

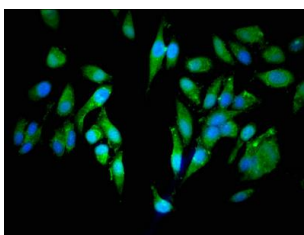
Immunogen:

Recombinant Human Centrosome-associated protein CEP250 protein (40-293AA).

Storage:

Preservative: 0.03% Proclin 300. Constituents: 50% Glycerol, 0.01M PBS, pH 7.4

Product Images



Immunofluorescent analysis of HeLa cells using PACO58500 at dilution of 1:100 and Alexa Fluor 488-conjugated AffiniPure Goat Anti-Rabbit IgG(H+L).