

# PIN4 Antibody



PACO58448

---

## Product Information

**Size:**

50ug

**Reactivity:**

Human, Mouse, Rat

**Source:**

Rabbit

**Isotype:**

IgG

**Applications:**

ELISA, WB, IHC, IF

**Recommended dilutions:**

ELISA:1:2000-1:10000, WB:1:500-1:5000,  
IHC:1:500-1:1000, IF:1:200-1:500

**Protein Background:**

Isoform 1 is involved as a ribosomal RNA processing factor in ribosome biogenesis. Binds to tightly bent AT-rich stretches of double-stranded DNA.

**Gene ID:**

PIN4

**Uniprot**

Q9Y237

**Synonyms:**

Peptidyl-prolyl cis-trans isomerase NIMA-interacting 4 (EC 5.2.1.8) (Parvulin-14) (Par14) (hPar14) (Parvulin-17) (Par17) (hPar17) (Peptidyl-prolyl cis-trans isomerase Pin4) (PPlase Pin4) (Peptidyl-prolyl cis/trans isomerase EPVH) (hEPVH) (Rotamase Pin4), PIN4

**Immunogen:**

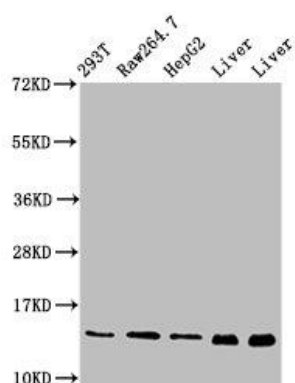
Recombinant Human Peptidyl-prolyl cis-trans isomerase NIMA-interacting 4 protein (1-131AA).

**Storage:**

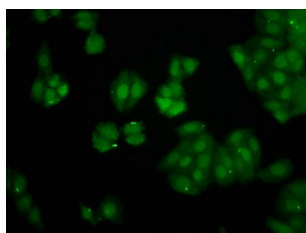
Preservative: 0.03% Proclin 300. Constituents: 50% Glycerol, 0.01M PBS, pH 7.4

## Product Images

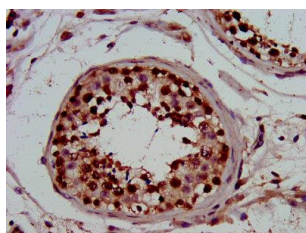
---



Western Blot. Positive WB detected in: 293T whole cell lysate, RAW264.7 whole cell lysate, HepG2 whole cell lysate, Rat liver tissue, Mouse liver tissue. All lanes: PIN4 antibody at 5 $\mu$ g/ml. Secondary. Goat polyclonal to rabbit IgG at 1/50000 dilution. Predicted band size: 14, 17 kDa. Observed band size: 14 kDa.



Immunofluorescence staining of HepG2 cells with PACO58448 at 1:266, counter-stained with DAPI. The cells were fixed in 4% formaldehyde, permeabilized using 0.2% Triton X-100 and blocked in 10% normal Goat Serum. The cells were then incubated with the antibody overnight at 4°C. The secondary antibody was Alexa Fluor 488-conjugated AffiniPure Goat Anti-Rabbit IgG(H+L).



IHC image of PACO58448 diluted at 1:800 and staining in paraffin-embedded human testis tissue performed on a Leica Bond™ system. After dewaxing and hydration, antigen retrieval was mediated by high pressure in a citrate buffer (pH 6.0). Section was blocked with 10% normal goat serum 30min at RT. Then primary antibody (1% BSA) was incubated at 4°C overnight. The primary is detected by a biotinylated secondary antibody and visualized using an HRP conjugated SP system.